



MarinTrust Standard V2

By-product Fishery Assessment

Report Template

Vietnam Albacore Tuna

FAO Area 81

MarinTrust Programme

Unit C, Printworks

22 Amelia Street

London

SE17 3BZ

E: standards@marin-trust.com

T: +44 2039 780 819

Table 1 Application details and summary of the assessment outcome

Fishery Under Assessment	Species:	Albacore tuna (<i>Thunnus alalunga</i>)
	Geographical area:	FAO Area 81 Pacific Southwest
	Flag country:	New Zealand Australia
	Stock:	South Pacific albacore tuna
Date	26/07/2022	
Report Code	BP100	
Assessor	Heri	
Flag country - PASS	PASS	
Flag country - FAIL		

Application details and summary of the assessment outcome			
Company Name(s): Thien Quynh Co Ltd			
Country: Vietnam			
Email address: thienquynh.co@gmail.com		Applicant Code:	
Certification Body Details			
Name of Certification Body:		LRQA	
Assessor	Peer Reviewer	Assessment Days	Initial/Surveillance/ Re-approval
Heri	Kate Morris	0,5	Initial
Assessment Period	To July 2022		

Scope Details	
Main Species	Albacore tuna (<i>Thunnus alalunga</i>)
Stock	South Pacific albacore tuna
Fishery Location	FAO Area 81 Pacific Southwest
Management Authority (Country/ State)	Western and Central Pacific Fisheries Commission (WCPFC)
Gear Type(s)	Pole lines, handlines and longlines
Outcome of Assessment	
Peer Review Evaluation	
Recommendation	

Table 2. Assessment Determination

Assessment Determination
<p>If any species is categorised as Endangered or Critically Endangered on IUCN's Red List, or if it appears in the CITES appendices, it cannot be approved for use as Marin Trust raw material. Albacore Tuna (<i>Thunnus alalunga</i>) is listed on the IUCN Red List as globally Near Threatened (NT) and is not listed in CITES such that albacore-derived products are eligible for approval for use as Marin Trust by-product raw material.</p> <p>For assessment and management purposes, the fishery managed under the Western and Central Pacific Fisheries Commission (WCPFC) is assessed under category C as reference points are defined for this stock</p> <p>Fishery removals of the stock are considered in the stock assessment process so the stock PASSES Clause C1.1. Further, the biomass is above MSY therefore, the stock PASSES Clause C1.2</p> <p>As both Clause C1.1 and C1.2 are met, the by-product covered by this report is APPROVED for the production of fishmeal and fish oil under the current MarinTrust v 2.0 by-product standard.</p>
Fishery Assessment Peer Review Comments
<p>The by-product fishery under assessment here is the Western and Central Pacific Ocean (WCPO) Albacore tuna (<i>Thunnus alalunga</i>) fishery, targeted by Vietnamese vessels in FAO 81. Albacore tuna is correctly classified by the auditor as category C species and the C1 scoring table has been completed by the auditor with evidence to support their final determination. The assessment would benefit from additional information in C1.1. regarding reporting of catch by Vietnamese vessels to WCPO. The fishery under assessment passes C1 scoring.</p> <p>The peer review supports the auditor's recommendation to approve this fishery under the Marin Trust IFFO RS v2.0 by-product standard for the production of fishmeal and fish oil.</p>
Notes for On-site Auditor

Species Categorisation

NB: If any species is categorised as Endangered or Critically Endangered on the IUCN Red List, or if it appears in CITES Appendix 1, it **cannot** be approved for use as a MarinTrust raw material. material¹ If the IUCN assessment was completed more than 5 years prior to the time of the assessment please refer to the most recent stock assessment, ICES advice², current national legislation or international binding agreements.

IUCN Red list Category

By-product material from a species listed by IUCN (the International Union for Conservation of Nature) under the Red List for the following categories shall immediately fail the assessment;

- EXTINCT (E) AND EXTINCT IN THE WILD (EW)
- CRITICALLY ENDANGERED (CR) facing an extremely high risk of extinction in the wild.
- ENDANGERED (EN) facing a very high risk of extinction in the wild.

By-product material may be used from the following categories provided that all clauses in the MarinTrust standard are passed.

- VULNERABLE (VU) facing a high risk of extinction in the wild.
- NEAR THREATENED (NT) does not qualify for above now, but is close or is likely to qualify for, a threatened category in the near future.
- LEAST CONCERN (LC) Widespread and abundant.
- DATA DEFICIENT (DD) and NOT EVALUATED (NE)

Table 3 Species Categorisation Table

Common name	Latin name	Stock	Management	Category	IUCN Red List Category ¹	CITES Appendix 1 ²
Albacore tuna	<i>Thunnus alalunga</i>	South Pacific albacore tuna	WCPFC	C		LC

¹ <https://www.iucnredlist.org/>

² <https://cites.org/eng/app/appendices.php>

CATEGORY C SPECIES

In a by-product assessment, Category C species are those which are subject to a species-specific management regime and are usually targeted species in fisheries for human consumption.

Clause C1 should be completed for each Category C species. If there are no Category C species in the fishery under assessment, this section can be deleted. Where a species fails this Clause, it should be assessed as a Category D species instead.

Species Name		Albacore Tuna (<i>Thunnus alalunga</i>)	
C1	Category C Stock Status - Minimum Requirements		
	C1.1	Fishery removals of the species in the fishery under assessment are included in the stock assessment process, OR are considered by scientific authorities to be negligible.	Yes
	C1.2	The species is considered, in its most recent stock assessment, to have a biomass above the limit reference point (or proxy), OR removals by the fishery under assessment are considered by scientific authorities to be negligible.	Yes

Clause outcome: PASS

C1.1 Fishery removals of the species in the fishery under assessment are included in the stock assessment process, OR are considered by scientific authorities to be negligible.

Catch data for all fleets across gears are included in the stock assessment process by the Western and Central Pacific Fisheries Commission (WCPFC). Vietnam tuna catch data reported in the annual catch estimates in the SC17-ST-IP-01 report. Regular session of the Science Committee gives updates on the stock assessment process. The SC17 show the time series of catch by fishing gears by years as in Figure 1.

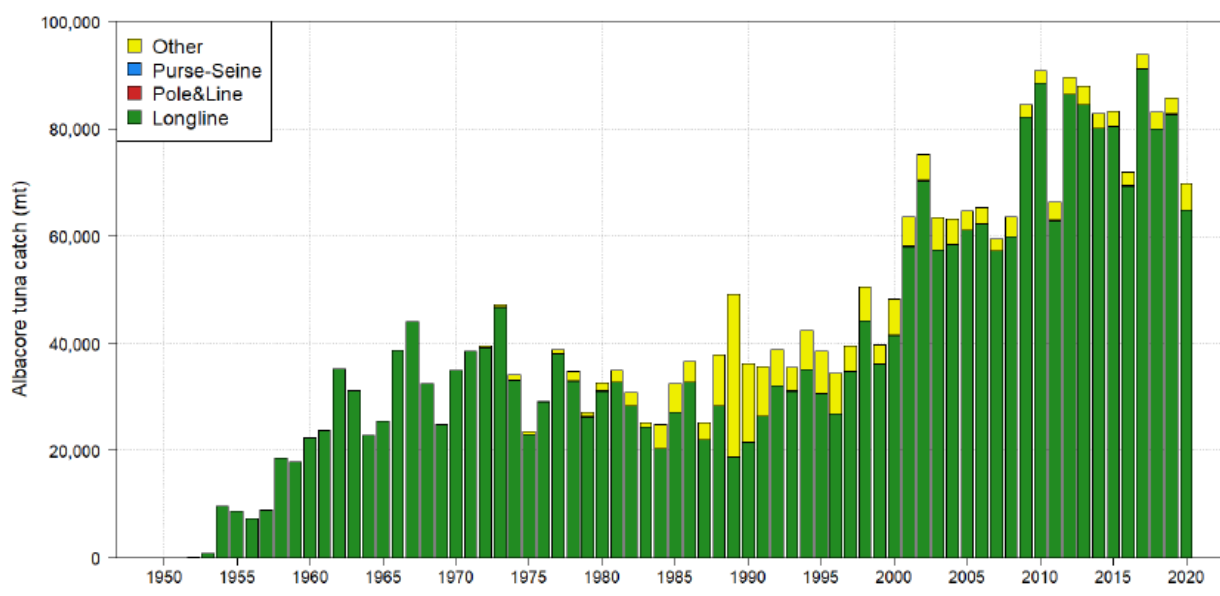


Figure 1. South Pacific albacore tuna catch (mt) by gear type and year for the South Pacific as a whole

Fishery removals of the species in the fishery under assessment are included in the stock assessment process

C1.2 The species is considered, in its most recent stock assessment, to have a biomass above the limit reference point (or proxy), OR removals by the fishery under assessment are considered by scientific authorities to be negligible.

The recent and latest spawning potential depletion and fishing mortality (relative to FMSY) from each model within the uncertainty grid is presented in Figure 46 for the South Pacific as a whole. All models indicated that the South Pacific albacore stock is not overfished ($SB_{\text{recent}}/SB_{F=0}$ and $SB_{\text{latest}}/SB_{F=0} > 0.2$), nor subject to overfishing ($F_{\text{recent}}/F_{\text{MSY}} < 1$)

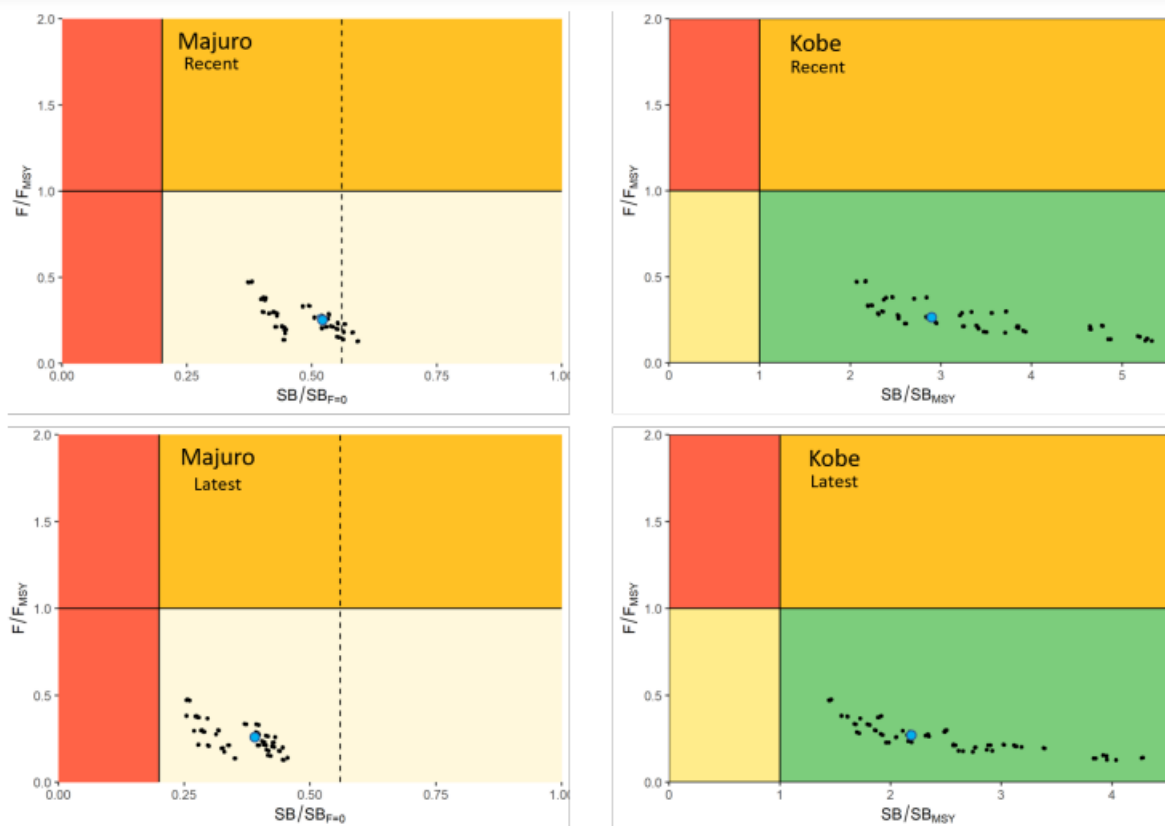


Figure 2. Majuro (left) and Kobe (right) plots summarising the results for each of the models in the structural uncertainty grid for the recent (2016-2019) and latest (2019) periods. The vertical dotted line on the Majuro plots is included to indicate the interim TRP of 0.56 $SB_{F=0}$ for the WCPFC-CA albacore fishery, but note that these data represent the estimates for the entire model area. The blue point is the diagnostic case model

The species is considered, in its most recent stock assessment, to have a biomass above the limit reference point

References

- <https://meetings.wcpfc.int/node/12573>
- <https://meetings.wcpfc.int/node/12537>
- <https://meetings.wcpfc.int/node/12551>

Links

MarinTrust Standard clause	1.3.2.2
FAO CCRF	7.5.3
GSSI	D.3.04, D5.01