



MarinTrust Standard V2

By-product Fishery Assessment Summer-spawn herring (*Clupea harengus*) in FAO 27, ICES Division 5.a: Icelandic Grounds

MarinTrust Programme

Unit C, Printworks

22 Amelia Street

London

SE17 3BZ

E: standards@marin-trust.com

T: +44 2039 780 819

Table 1 Application details and summary of the assessment outcome

Fishery Under Assessment	Species:	Herring (<i>Clupea harengus</i>)
	Geographical area:	FAO 27 Northeast Atlantic
	Country of origin of the product:	Iceland
	Stock:	Summer-spawn herring in FAO 27 Division 5.a (Icelandic Grounds)
Date	15 September 2022	
Report Code	ISL03	
Assessor	Matthew Jew	
Country of origin of the product - PASS	Iceland	
Country of origin of the product - FAIL	NA	

Application details and summary of the assessment outcome			
Company Name(s): Loðnuvinnslan hf			
Country: Iceland			
Email address:		Applicant Code:	
Certification Body Details			
Name of Certification Body:		Global Trust Certification	
Assessor	Peer Reviewer	Assessment Days	Initial/Surveillance/ Re-approval
Matthew Jew	Léa Lebechnech	0.5	Initial
Assessment Period	Up to September 2022		

Scope Details	
Main Species	Herring (<i>Clupea harengus</i>)
Stock	Summer-spawn herring in FAO 27 Division 5.a (Icelandic Grounds)
Fishery Location	FAO 27 Northeast Atlantic
Management Authority (Country/ State)	Icelandic Ministry of Industry and Innovation
Gear Type(s)	2021 Estimates: Pelagic Trawl (100%)
Outcome of Assessment	
Peer Review Evaluation	Agree with the assessor's recommendation of approval
Recommendation	APPROVED

Table 2. Assessment Determination

Assessment Determination
<p>If any species is categorised as Endangered or Critically Endangered on IUCN's Red List, or if it appears in the CITES appendices, it cannot be approved for use as Marin trust raw material. Herring (<i>Clupea harengus</i>) do not appear as Endangered or Critically Endangered on IUCN's Red List, nor do they appear in CITES appendices; therefore, <i>Clupea harengus</i> is eligible for approval for use as Marin trust by-product raw material.</p> <p>The Icelandic Ministry of Industries and Innovation has a management plan for Icelandic summer-spawn herring since 2017. The rule has been evaluated by ICES and is considered to be precautionary and conforms to ICES MSY approach. The stock is subject to a specific management regime and reference points are defined, therefore it was assessed under Category C.</p> <p>Fishery removals are included in the stock assessment and it PASSES Clause C1.1. The stock is considered, in its most recent stock assessment, to have biomass above the limit reference point, it PASSES Clause C1.2.</p> <p>Therefore, summer-spawn herring in Division 5.a (Icelandic Grounds) is APPROVED for the production of fishmeal and fish oil under the current MarinTrust v2.0 by-products.</p>
Fishery Assessment Peer Review Comments
<p>The internal peer reviewer agrees with the assessor's determination, who correctly classified the stock of Icelandic summer-spawn herring under Category C, as the stock is subject to a specific management regime in place and reference points are defined.</p> <p>Fishery removals are included in the stock assessment and the stock has its biomass above reference point, so it passes Clauses C1.1 and C1.2.</p> <p>Therefore, summer-spawn herring in FAO 27 Division 5.a (Icelandic Grounds) is APPROVED for the production of fishmeal and fish oil under the current MarinTrust v 2.0 by-products standards.</p>
Notes for On-site Auditor
N/A

Species Categorisation

NB: If any species is categorised as Endangered or Critically Endangered on the IUCN Red List, or if it appears in CITES Appendix 1, it **cannot** be approved for use as an MarinTrust raw material.

IUCN Red list Category

By-product material from a species listed by IUCN (the International Union for Conservation of Nature) under the Red List for the following categories shall immediately fail the assessment;

- EXTINCT (E) AND EXTINCT IN THE WILD (EW)
- CRITICALLY ENDANGERED (CR) facing an extremely high risk of extinction in the wild.
- ENDANGERED (EN) facing a very high risk of extinction in the wild.

By-product material may be used from the following categories provided that all clauses in the MarinTrust standard are passed.

- VULNERABLE (VU) facing a high risk of extinction in the wild.
- NEAR THREATENED (NT) does not qualify for above now, but is close or is likely to qualify for, a threatened category in the near future.
- LEAST CONCERN (LC) Widespread and abundant.
- DATA DEFICIENT (DD) and NOT EVALUATED (NE)

Table 3 Species Categorisation Table

Common name	Latin name	Stock	Management	Category	IUCN Red List Category ¹	CITES Appendix 1 ²
Herring	<i>Clupea harengus</i>	Summer-spawn herring in FAO 27 Division 5.a (Icelandic Grounds)	Icelandic Ministry of Industries and Innovation	C	LC	No

¹ <https://www.iucnredlist.org/>

² <https://cites.org/eng/app/appendices.php>

CATEGORY C SPECIES

In a by-product assessment, Category C species are those which are subject to a species-specific management regime and are usually targeted species in fisheries for human consumption.

Clause C1 should be completed for each Category C species. If there are no Category C species in the fishery under assessment, this section can be deleted. Where a species fails this Clause, it should be assessed as a Category D species instead.

Species Name		Herring (<i>Clupea harengus</i>)																																																																									
C1	Category C Stock Status - Minimum Requirements																																																																										
	C1.1	Fishery removals of the species in the fishery under assessment are included in the stock assessment process, OR are considered by scientific authorities to be negligible.	Yes																																																																								
	C1.2	The species is considered, in its most recent stock assessment, to have a biomass above the limit reference point (or proxy), OR removals by the fishery under assessment are considered by scientific authorities to be negligible.	Yes																																																																								
Clause outcome:			PASS																																																																								
C1.1 Fishery removals of the species in the fishery under assessment are included in the stock assessment process, OR are considered by scientific authorities to be negligible.																																																																											
This stock assessment is an age-based analytical model that uses catches (including commercial landings) and one age-structured acoustic survey index in the model and in the forecast. Long-term catch data are presented in Figure 1.																																																																											
ICES advises that when the Icelandic management plan is applied, catches in the fishing year 2022/2023 should be no more than 66 195 tonnes.																																																																											
<div><div><div>Landings</div><table border="1"><caption>Estimated Landings (in 1000 tonnes)</caption><thead><tr><th>Year</th><th>Landings</th></tr></thead><tbody><tr><td>1986</td><td>75</td></tr><tr><td>1987</td><td>95</td></tr><tr><td>1988</td><td>105</td></tr><tr><td>1989</td><td>110</td></tr><tr><td>1990</td><td>115</td></tr><tr><td>1991</td><td>110</td></tr><tr><td>1992</td><td>105</td></tr><tr><td>1993</td><td>135</td></tr><tr><td>1994</td><td>125</td></tr><tr><td>1995</td><td>95</td></tr><tr><td>1996</td><td>65</td></tr><tr><td>1997</td><td>85</td></tr><tr><td>1998</td><td>95</td></tr><tr><td>1999</td><td>100</td></tr><tr><td>2000</td><td>95</td></tr><tr><td>2001</td><td>95</td></tr><tr><td>2002</td><td>125</td></tr><tr><td>2003</td><td>115</td></tr><tr><td>2004</td><td>105</td></tr><tr><td>2005</td><td>135</td></tr><tr><td>2006</td><td>155</td></tr><tr><td>2007</td><td>150</td></tr><tr><td>2008</td><td>45</td></tr><tr><td>2009</td><td>45</td></tr><tr><td>2010</td><td>50</td></tr><tr><td>2011</td><td>70</td></tr><tr><td>2012</td><td>70</td></tr><tr><td>2013</td><td>95</td></tr><tr><td>2014</td><td>70</td></tr><tr><td>2015</td><td>60</td></tr><tr><td>2016</td><td>35</td></tr><tr><td>2017</td><td>40</td></tr><tr><td>2018</td><td>30</td></tr><tr><td>2019</td><td>35</td></tr><tr><td>2020</td><td>70</td></tr></tbody></table></div></div>				Year	Landings	1986	75	1987	95	1988	105	1989	110	1990	115	1991	110	1992	105	1993	135	1994	125	1995	95	1996	65	1997	85	1998	95	1999	100	2000	95	2001	95	2002	125	2003	115	2004	105	2005	135	2006	155	2007	150	2008	45	2009	45	2010	50	2011	70	2012	70	2013	95	2014	70	2015	60	2016	35	2017	40	2018	30	2019	35	2020	70
Year	Landings																																																																										
1986	75																																																																										
1987	95																																																																										
1988	105																																																																										
1989	110																																																																										
1990	115																																																																										
1991	110																																																																										
1992	105																																																																										
1993	135																																																																										
1994	125																																																																										
1995	95																																																																										
1996	65																																																																										
1997	85																																																																										
1998	95																																																																										
1999	100																																																																										
2000	95																																																																										
2001	95																																																																										
2002	125																																																																										
2003	115																																																																										
2004	105																																																																										
2005	135																																																																										
2006	155																																																																										
2007	150																																																																										
2008	45																																																																										
2009	45																																																																										
2010	50																																																																										
2011	70																																																																										
2012	70																																																																										
2013	95																																																																										
2014	70																																																																										
2015	60																																																																										
2016	35																																																																										
2017	40																																																																										
2018	30																																																																										
2019	35																																																																										
2020	70																																																																										
Figure 1. Long-term catches for summer-spawn herring in Division 5.a (Icelandic Grounds). Source: ICES 2022.																																																																											
Therefore, fishery removals of the stock, including from the fishery under assessment, are included in the stock assessment process. The stock PASSES Clause C1.1.																																																																											
C1.2 The species is considered, in its most recent stock assessment, to have a biomass above the limit reference point (or proxy), OR removals by the fishery under assessment are considered by scientific authorities to be negligible.																																																																											
The most recent ICES stock assessment (2022) indicates that spawning-stock biomass (SSB) and Biomass 4+ (B4+) are above MSY B _{mgt} , MSY B _{trigger} , B _{pa} , and B _{lim} (Figure 2).																																																																											

Stock size

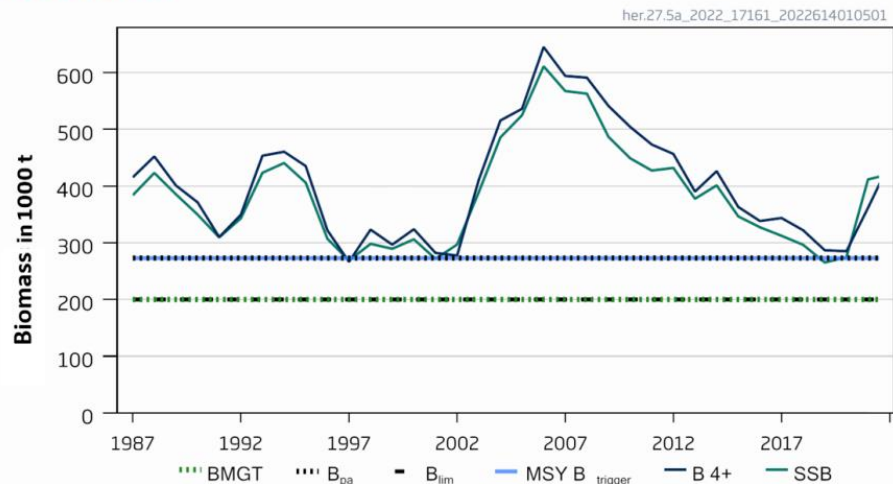


Figure 2. Long-term spawning stock biomass (SSB) trends in Division 5.a (Icelandic Grounds). Source: ICES 2022

Therefore, the stock is considered, in its most recent stock assessment, to have biomass above the limit reference point. The stock PASSES Clause C1.2.

References

ICES. 2022. Herring (*Clupea harengus*) in Division 5.a, summer-spawning herring (Iceland grounds). In Report of the ICES Advisory Committee, 2022. ICES Advice 2022, her.27.5a, <https://doi.org/10.17895/ices.advice.19447988>.

Links

MarinTrust Standard clause	1.3.2.2
FAO CCRF	7.5.3
GSSI	D.3.04, D5.01