



## MarinTrust Standard V2

### By-product Fishery Assessment *Mackerel, Faroe Islands, EU, Iceland, Greenland, Norway*

**MarinTrust Programme**

Unit C, Printworks

22 Amelia Street

London

SE17 3BZ

E: [standards@marin-trust.com](mailto:standards@marin-trust.com)

T: +44 2039 780 819

**Table 1 Application details and summary of the assessment outcome**

Fishery Under Assessment	Species:	Atlantic mackerel ( <i>Scomber scombrus</i> )
	Geographical area:	FAO 27 Northeast Atlantic
	Country of origin of the product:	Faroe Islands, EU, Iceland, Greenland, Norway
	Stock:	ICES subareas 1–8 and 14, and in Division 9.a (Northeast Atlantic and adjacent waters)
Date	June 2022	
Report Code	FRO03	
Assessor	Sam Peacock	
Country of origin of the product - PASS	Faroe Islands, EU, Iceland, Greenland, Norway	
Country of origin of the product - FAIL	None	

Application details and summary of the assessment outcome			
Company Name(s): Havsbrún			
Country: Faroe Islands			
Email address: havsbrun@havsbrun.fo		Applicant Code:	
Certification Body Details			
Name of Certification Body:		LRAQ	
Assessor	Peer Reviewer	Assessment Days	Initial/Surveillance/ Re-approval
Sam Peacock	Kate Morris	0.3	Surveillance
Assessment Period	June 2022		

Scope Details	
Main Species	Atlantic mackerel ( <i>Scomber scombrus</i> )
Stock	ICES subareas 1–8 and 14, and in Division 9.a
Fishery Location	FAO 27 Northeast Atlantic
Management Authority (Country/ State)	European Commission & national authorities of Faroes Islands, Greenland, Norway, Iceland
Gear Type(s)	Pelagic trawl, purse seine, others (1%)
Outcome of Assessment	
Overall Outcome	Approve
Clauses Failed	None
Peer Review Evaluation	Approve
Recommendation	Approve

## Table 2. Assessment Determination

<b>Assessment Determination</b>
<p>Mackerel has been categorised by the IUCN as a species of Least Concern, and does not appear in the CITES appendices. As it is managed in relation to defined reference points and under annual quotas, it has been assessed under Category C.</p> <p>The most recent ICES stock assessment and advice was published in 2021. The stock assessment used commercial catch data from all participating coastal states and concluded that the stock biomass is above both the limit and target reference points. There is no international-agreed management strategy for the stock, and total TACs and landings have exceeded the ICES advice in recent years.</p> <p>As the fishery continues to meet the MT requirements, it should remain approved for use as a raw material.</p>
<b>Fishery Assessment Peer Review Comments</b>
<p>The by-product fishery under assessment here is the Atlantic Mackerel (<i>Scomber scombrus</i>) fishery, targeted by EU, Faroes Islands, Greenland, Norway, and Icelandic vessels in FAO 27, ICES subareas 1–8 and 14, and in Division 9.a. Mackerel is managed unilaterally across the target fleets countries but a defined management plan is in place. Mackerel is correctly classified by the auditor as category C species and the C1 scoring table has been completed by the auditor with sufficient evidence to support their final determination. The fishery under assessment passes C1 scoring.</p> <p>The peer review supports the auditor’s recommendation to approve this fishery under the Marin Trust v2.0 by-product standard for the production of fishmeal and fish oil.</p>
<b>Notes for On-site Auditor</b>
<p>There is nothing to highlight to the onsite auditor at this stage.</p>

## Species Categorisation

**NB:** If any species is categorised as Endangered or Critically Endangered on the IUCN Red List, or if it appears in CITES Appendix 1, it **cannot** be approved for use as a MarinTrust raw material.

### IUCN Red list Category

By-product material from a species listed by IUCN (the International Union for Conservation of Nature) under the Red List for the following categories shall immediately fail the assessment;

- EXTINCT (E) AND EXTINCT IN THE WILD (EW)
- CRITICALLY ENDANGERED (CR) facing an extremely high risk of extinction in the wild.
- ENDANGERED (EN) facing a very high risk of extinction in the wild.

By-product material may be used from the following categories provided that all clauses in the MarinTrust standard are passed.

- VULNERABLE (VU) facing a high risk of extinction in the wild.
- NEAR THREATENED (NT) does not qualify for above now, but is close or is likely to qualify for, a threatened category in the near future.
- LEAST CONCERN (LC) Widespread and abundant.
- DATA DEFICIENT (DD) and NOT EVALUATED (NE)

## Table 3 Species Categorisation Table

Common name	Latin name	Stock	Management	Category	IUCN Red List Category <sup>1</sup>	CITES Appendix 1 <sup>2</sup>
Atlantic mackerel	<i>Scomber scombrus</i>	ICES subareas 1–8 and 14, and in Division 9.a	Yes	C	Least Concern <sup>3</sup>	No

<sup>1</sup> <https://www.iucnredlist.org/>

<sup>2</sup> <https://cites.org/eng/app/appendices.php>

<sup>3</sup> <https://www.iucnredlist.org/species/170354/6764313>

## CATEGORY C SPECIES

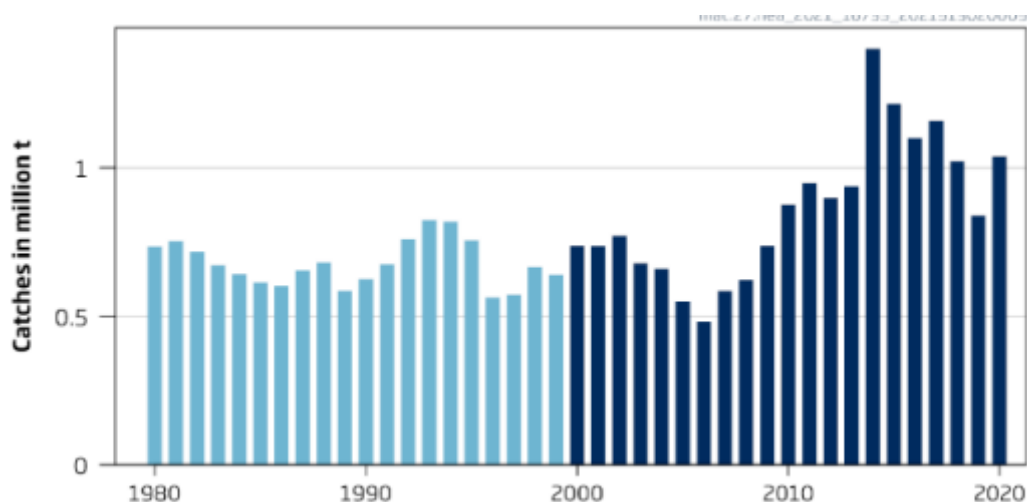
In a by-product assessment, Category C species are those which are subject to a species-specific management regime and are usually targeted species in fisheries for human consumption.

Clause C1 should be completed for each Category C species. If there are no Category C species in the fishery under assessment, this section can be deleted. Where a species fails this Clause, it should be assessed as a Category D species instead.

Species Name		Atlantic mackerel ( <i>Scomber scombrus</i> )	
C1	Category C Stock Status - Minimum Requirements		
	C1.1	Fishery removals of the species in the fishery under assessment are included in the stock assessment process, OR are considered by scientific authorities to be negligible.	PASS
	C1.2	The species is considered, in its most recent stock assessment, to have a biomass above the limit reference point (or proxy), OR removals by the fishery under assessment are considered by scientific authorities to be negligible.	PASS
Clause outcome:			PASS

**C1.1 Fishery removals of the species in the fishery under assessment are included in the stock assessment process, OR are considered by scientific authorities to be negligible.**

The most recent stock assessment for Northeast Atlantic mackerel was conducted by ICES in 2021. The assessment used catch data, tagging data and survey indices to implement an age-based analytical model (SAM). The estimated total catch in 2020 was 1,039,513t (ICES 2021), including discards and slippage, and the projected total catch for 2021 was 1,199t,103t. Although the stock is assessed and managed as a single unit, ICES also considers there to be three separate spawning components: western, southern and North Sea. Catch data are broken down by area and sub-assessments are conducted for these components. Advice for each area is also given.



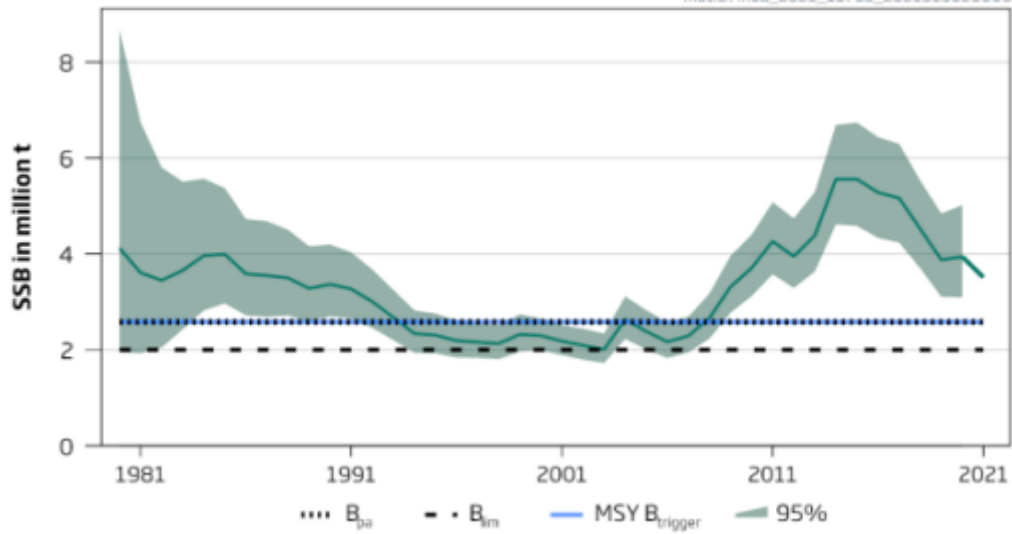
**Mackerel in the Northeast Atlantic, estimated total catches 1980 – 2020 (all spawning components) (ICES 2021).**

Stock assessments take into account all fishery removals, C1.1 is met.

**C1.2 The species is considered, in its most recent stock assessment, to have a biomass above the limit reference point (or proxy), OR removals by the fishery under assessment are considered by scientific authorities to be negligible.**

The most recent ICES assessment, conducted in 2021, concluded that the spawning stock biomass is above MSY  $B_{trigger}$ ,  $B_{pa}$ , and  $B_{lim}$ . Biomass in 2021 at spawning time was estimated to be 3,510,849t, against a target reference point ( $B_{trigger}$ ) of 2,580,000t and a limit reference point ( $B_{lim}$ ) of 2,000,000t (ICES 2021).

mac.27.nea\_2021\_16735\_2021913020009



**Mackerel in the Northeast Atlantic, estimated Spawning Stock Biomass (SSB), 1980 – 2020 (all spawning components) (ICES 2021).**

There is currently no internationally-agreed management strategy; however, the management measures which are in place, broadly reflect the ICES advice, which itself originates from an MSY-based, precautionary approach. However, the sum of unilateral quotas set by the individual coastal states has frequently exceeded the ICES advice in recent years, leading to total landings slightly higher than the level recommended.

Stock biomass is currently estimated to be above the limit reference point, and therefore C1.2 is met.

**References**

ICES (2021) Mackerel (*Scomber scombrus*) in subareas 1-8 and 14 and division 9.a (the Northeast Atlantic and adjacent waters). In Report of the ICES Advisory Committee, 2021. ICES Advice 2021, mac.27.nea. <https://doi.org/10.17895/ices.advice.7789>

**Links**

<b>MarinTrust Standard clause</b>	1.3.2.2
<b>FAO CCRF</b>	7.5.3
<b>GSSI</b>	D.3.04, D5.01