



MarinTrust Standard V2

By-product Fishery Assessment *European sardine in ICES Divisions 8c & 9a*

MarinTrust Programme

Unit C, Printworks

22 Amelia Street

London

SE17 3BZ

E: standards@marin-trust.com

T: +44 2039 780 819

Table 1 Application details and summary of the assessment outcome

Fishery Under Assessment	Species:	European sardine (<i>Sardina pilchardus</i>)
	Geographical area:	ICES Divisions 8c & 9a
	Country of origin of the product:	Spain
	Stock:	ICES Divisions 8c & 9a
Date	August 2022	
Report Code	ESP12	
Assessor	Sam Peacock	
Country of origin of the product - PASS	Spain	
Country of origin of the product - FAIL	None	

Application details and summary of the assessment outcome			
Company Name(s): Sarval Bio-Industries			
Country: Spain			
Email address: maria.mato@sarval.es		Applicant Code:	
Certification Body Details			
Name of Certification Body:		LRQA	
Assessor	Peer Reviewer	Assessment Days	Initial/Surveillance/ Re-approval
Sam Peacock	Jose Peiro Crespo	0.25	Surveillance
Assessment Period	August 2022		

Scope Details	
Main Species	European sardine (<i>Sardina pilchardus</i>)
Stock	ICES Divisions 8c & 9a
Fishery Location	ICES Divisions 8c & 9a
Management Authority (Country/ State)	EU
Gear Type(s)	Purse seine & others
Outcome of Assessment	
Peer Review Evaluation	Agree with assessor's determination
Recommendation	Approved

Table 2. Assessment Determination

Assessment Determination
<p>European sardine has been categorised on the IUCN Red List as Least Concern, and does not appear in the CITES appendices. Sardine in Divisions 8c and 9a is managed relative to established reference points and therefore was assessed under Category C. The annual stock assessment includes consideration of all fishery removals, and the stock biomass is currently estimated to be above the target and limit reference points. As this byproduct meets the MarinTrust requirements it should be approved for use as a raw material.</p>
Fishery Assessment Peer Review Comments
<p>The assessor correctly classified Cantabrian Sea and Atlantic Iberian waters sardine stock as category C, this stock is managed and reference points are defined.</p> <p>A stock assessment is conducted annually by the ICES Working Group on Southern Horse Mackerel, Anchovy and Sardine. Fishery removals are considered in the stock assessment process. The biomass of the stock in 2022 is estimated to be above the target and limit reference points.</p> <p>The Cantabrian Sea and Atlantic Iberian waters sardine stock passes both Clauses C1.1 and C1.2 and is therefore approved under the Marin Trust v 2.0 by-products standard.</p>
Notes for On-site Auditor

Species Categorisation

NB: If any species is categorised as Endangered or Critically Endangered on the IUCN Red List, or if it appears in CITES Appendix 1, it **cannot** be approved for use as a MarinTrust raw material.

IUCN Red list Category

By-product material from a species listed by IUCN (the International Union for Conservation of Nature) under the Red List for the following categories shall immediately fail the assessment;

- EXTINCT (E) AND EXTINCT IN THE WILD (EW)
- CRITICALLY ENDANGERED (CR) facing an extremely high risk of extinction in the wild.
- ENDANGERED (EN) facing a very high risk of extinction in the wild.

By-product material may be used from the following categories provided that all clauses in the MarinTrust standard are passed.

- VULNERABLE (VU) facing a high risk of extinction in the wild.
- NEAR THREATENED (NT) does not qualify for above now, but is close or is likely to qualify for, a threatened category in the near future.
- LEAST CONCERN (LC) Widespread and abundant.
- DATA DEFICIENT (DD) and NOT EVALUATED (NE)

Table 3 Species Categorisation Table

Common name	Latin name	Stock	Management	Category	IUCN Red List Category ¹	CITES Appendix 1 ²
European sardine	<i>Sardina pilchardus</i>	ICES Divisions 8C & 9a	Yes	C	Least Concern ³	No

¹ <https://www.iucnredlist.org/>

² <https://cites.org/eng/app/appendices.php>

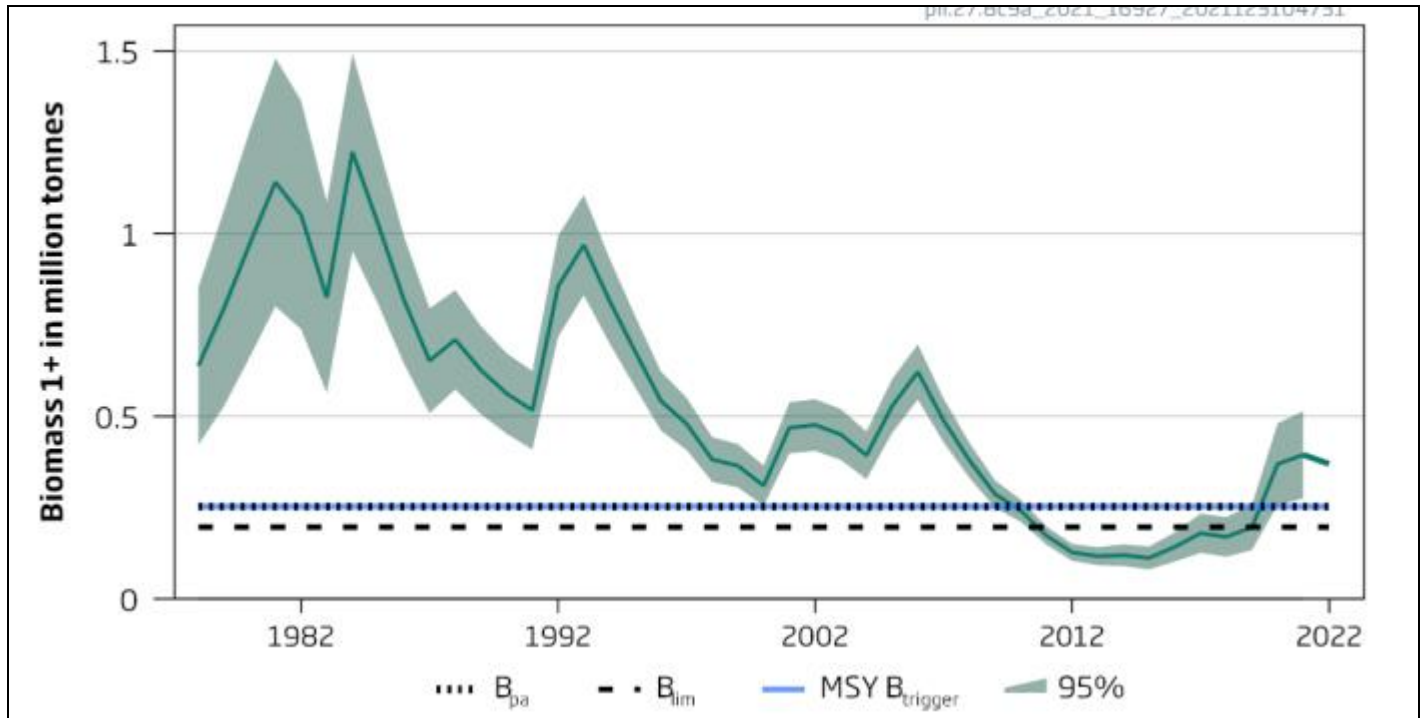
³ <https://www.iucnredlist.org/species/198580/15542481>

CATEGORY C SPECIES

In a by-product assessment, Category C species are those which are subject to a species-specific management regime and are usually targeted species in fisheries for human consumption.

Clause C1 should be completed for each Category C species. If there are no Category C species in the fishery under assessment, this section can be deleted. Where a species fails this Clause, it should be assessed as a Category D species instead.

Species Name		European sardine (<i>Sardina pilchardus</i>)	
C1	Category C Stock Status - Minimum Requirements		
	C1.1	Fishery removals of the species in the fishery under assessment are included in the stock assessment process, OR are considered by scientific authorities to be negligible.	PASS
	C1.2	The species is considered, in its most recent stock assessment, to have a biomass above the limit reference point (or proxy), OR removals by the fishery under assessment are considered by scientific authorities to be negligible.	PASS
			Clause outcome: PASS
<p>C1.1 Fishery removals of the species in the fishery under assessment are included in the stock assessment process, OR are considered by scientific authorities to be negligible.</p> <p>A stock assessment is conducted annually by the ICES Working Group on Southern Horse Mackerel, Anchovy and Sardine. The most recent assessment was conducted in 2021 using commercial catches, including international landings and ages from catch sampling. Discarding and bycatch are both considered to be negligible (ICES 2021). The annual ICES advice includes a section on “issues relevant for the advice” where any concerns over the robustness of data are raised; in the most recent advice this section does not include any concerns regarding the catch data. All fishery removals are included in the assessment and C1.1 is met.</p> <p>C1.2 The species is considered, in its most recent stock assessment, to have a biomass above the limit reference point (or proxy), OR removals by the fishery under assessment are considered by scientific authorities to be negligible.</p> <p>Target and limit reference points have been established for the stock. Target reference points $MSY B_{trigger}$ and B_{pa} are set at 252,523t. Limit reference point B_{lim} is set at 196,334t. Reference points are set relative to biomass older than 1 year (B_{1+}). The most recent stock assessment projected B_{1+} to be 369,328t in 2022, higher than the target and limit reference points. The most recent ICES advice states that “spawning-stock size is above $MSY B_{trigger}$, B_{pa}, and B_{lim}” (ICES 2021). Biomass is estimated to be above the limit reference point in the most recent stock assessment and C1.2 is met.</p>			



European sardine in ICES Divisions 8c and 9a. Biomass of individuals 1 year or older relative to reference points (ICES 2021).

References

ICES (2021). Sardine (*Sardina pilchardus*) in divisions 8.c and 9.a (Cantabrian Sea and Atlantic Iberian waters). In Report of the ICES Advisory Committee, 2021. ICES Advice 2021, pil.27.8c9a. <https://doi.org/10.17895/ices.advice.7816>

Links

MarinTrust Standard clause	1.3.2.2
FAO CCRF	7.5.3
GSSI	D.3.04, D5.01