



MarinTrust Standard V2

By-product Fishery Assessment *Skipjack Tuna (*Katsuwonus pelamis*) in FAO 21 and 31: Western Atlantic, Central and Northern*

MarinTrust Programme

Unit C, Printworks

22 Amelia Street

London

SE17 3BZ

E: standards@marin-trust.com

T: +44 2039 780 819

Table 1 Application details and summary of the assessment outcome

Fishery Under Assessment	Species:	Skipjack Tuna (<i>Katsuwonus pelamis</i>)
	Geographical area:	1. FAO 21 Atlantic, Northwest 2. FAO 31 Atlantic, Western Central
	Country of origin of the product:	Spain, Portugal
	Stock:	Skipjack Tuna from FAO 21 and 31 Western (Central and Northern) Atlantic
Date	5 August 2022	
Report Code	ESP26	
Assessor	Matthew Jew	
Country of origin of the product - PASS	Spain (Flag countries: Spain and Portugal)	
Country of origin of the product - FAIL	NA	

Application details and summary of the assessment outcome			
Company Name(s): Sarval Bio-industries Noroeste, S.A.U: Arteixo			
Country: Spain			
Email address:		Applicant Code:	
Certification Body Details			
Name of Certification Body:		Global Trust Certification	
Assessor	Peer Reviewer	Assessment Days	Initial/Surveillance/ Re-approval
Matthew Jew	Léa Lebechnech	0.5	Reapproval
Assessment Period	Up to August 2022		

Scope Details	
Main Species	Skipjack Tuna (<i>Katsuwonus pelamis</i>)
Stock	Skipjack Tuna from FAO 21 and 31 Western (Central and Northern) Atlantic
Fishery Location	1. FAO 21 Atlantic, Northwest 2. FAO 31 Atlantic, Western Central
Management Authority (Country/ State)	ICCAT, Ministry of Agriculture, Fisheries, and Food (Spain), and National Fisheries Authority (Portugal)
Gear Type(s)	Longline, Baitboat, Purse seine
Outcome of Assessment	
Peer Review Evaluation	Agree with the assessor's recommendation of approval
Recommendation	APPROVED

Table 2. Assessment Determination

Assessment Determination
<p>If any species is categorised as Endangered or Critically Endangered on IUCN's Red List, or if it appears in the CITES appendices, it cannot be approved for use as Marin trust raw material. Skipjack Tuna (<i>Katsuwonus pelamis</i>) do not appear as Endangered or Critically Endangered on IUCN's Red List, nor do they appear in CITES appendices; therefore, <i>Katsuwonus pelamis</i> is eligible for approval for use as Marin trust by-product raw material.</p> <p>The most recent stock assessment for Atlantic Ocean Skipjack Tuna was conducted in 2014 and is planned to be reassessed in 2022. The 2022 stock assessment process has begun and the data preparatory meeting was held in February 2022. Because this stock is not assessed on an annual basis, the findings of this assessment are based on the 2014 stock assessment and therefore, may be similar to previous years' findings.</p> <p>The assessment considers Skipjack Tuna in the Atlantic Ocean (FAO subareas 21 & 31) to be a single stock and this is the only stock under assessment. The stock is subject to a specific management regime, therefore it was assessed under Category C.</p> <p>Fishery removals are included in the stock assessment and it PASSES Clause C1.1. The stock is considered, in its most recent stock assessment, to have biomass above the limit reference point, it PASSES Clause C1.2.</p> <p>Therefore, Skipjack Tuna in Subareas 21 & 31 (Western Atlantic) is APPROVED for the production of fishmeal and fish oil under the current MarinTrust v2.0 by-products.</p>
Fishery Assessment Peer Review Comments
<p>The internal peer reviewer agrees with the assessor's determination, who correctly classified Western Atlantic Skipjack Tuna as category C, because reference points are defined to assess status of the stocks relative to and the stock is subject to a specific management regime.</p> <p>Fishery removals are included in the stock assessment process so the stock PASSES Clause C1.1. The Western Atlantic Skipjack Tuna stock is considered, in its most recent stock assessment, to have a biomass above the limit reference point, so it PASSES Clause C1.2.</p> <p>Therefore, Western Atlantic skipjack is APPROVED.</p>
Notes for On-site Auditor

Species Categorisation

NB: If any species is categorised as Endangered or Critically Endangered on the IUCN Red List, or if it appears in CITES Appendix 1, it **cannot** be approved for use as an MarinTrust raw material.

IUCN Red list Category

By-product material from a species listed by IUCN (the International Union for Conservation of Nature) under the Red List for the following categories shall immediately fail the assessment;

- EXTINCT (E) AND EXTINCT IN THE WILD (EW)
- CRITICALLY ENDANGERED (CR) facing an extremely high risk of extinction in the wild.
- ENDANGERED (EN) facing a very high risk of extinction in the wild.

By-product material may be used from the following categories provided that all clauses in the MarinTrust standard are passed.

- VULNERABLE (VU) facing a high risk of extinction in the wild.
- NEAR THREATENED (NT) does not qualify for above now, but is close or is likely to qualify for, a threatened category in the near future.
- LEAST CONCERN (LC) Widespread and abundant.
- DATA DEFICIENT (DD) and NOT EVALUATED (NE)

Table 3 Species Categorisation Table

Common name	Latin name	Stock	Management	Category	IUCN Red List Category ¹	CITES Appendix 1 ²
Skipjack Tuna	<i>Katsuwonus pelamis</i>	Skipjack Tuna in FAO 21, 31	International Commission for the Conservation of Atlantic Tunas (ICCAT), Ministry of Agriculture, Fisheries, and Food (Spain), and National Fisheries Authority (Portugal)	C	LC	No

¹ <https://www.iucnredlist.org/>

² <https://cites.org/eng/app/appendices.php>

CATEGORY C SPECIES

In a by-product assessment, Category C species are those which are subject to a species-specific management regime and are usually targeted species in fisheries for human consumption.

Clause C1 should be completed for each Category C species. If there are no Category C species in the fishery under assessment, this section can be deleted. Where a species fails this Clause, it should be assessed as a Category D species instead.

Species Name		Skipjack Tuna (<i>Katsuwonus pelamis</i>)	
C1	Category C Stock Status - Minimum Requirements		
	C1.1	Fishery removals of the species in the fishery under assessment are included in the stock assessment process, OR are considered by scientific authorities to be negligible.	Yes
	C1.2	The species is considered, in its most recent stock assessment, to have a biomass above the limit reference point (or proxy), OR removals by the fishery under assessment are considered by scientific authorities to be negligible.	Yes

Clause outcome: **PASS**

C1.1 Fishery removals of the species in the fishery under assessment are included in the stock assessment process, OR are considered by scientific authorities to be negligible.

Fishery removals of the species in the fishery under assessment are included in the stock assessment process via International Commission for the Conservation of Atlantic Tunas (ICCAT) processes. The stock was last assessed in 2014 and the next assessment is provisionally scheduled for 2022. However, in February 2022 a precursor meeting was held to prepare the data for the impending stock assessment (ICCAT 2022). The total catch series is shown in Figure 1.

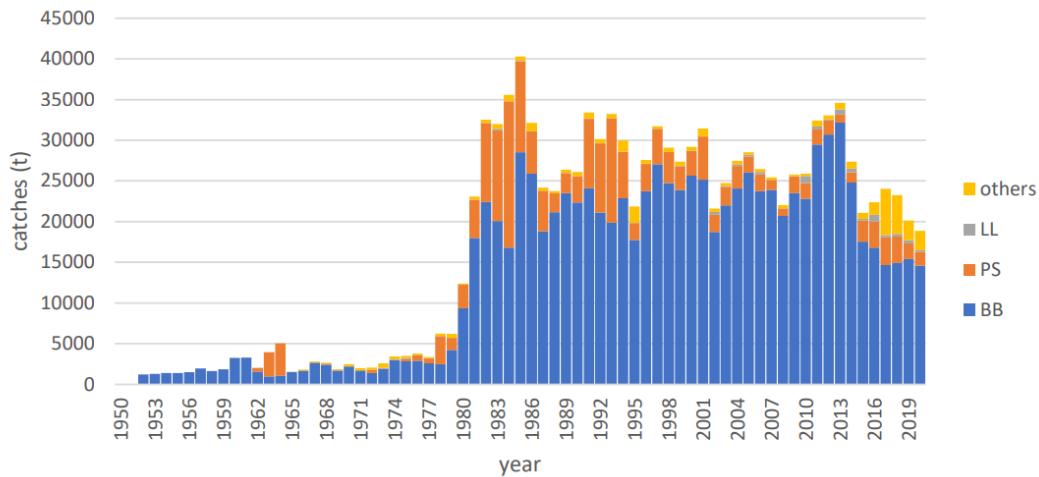


Figure 1. Catches of Skipjack Tuna by gear type in the Western Atlantic Ocean from 1950 to 2020. Source ICCAT 2022.

Therefore, fishery removals of the stock, including from the fishery under assessment, are included in the stock assessment process. **The stock passes Clause C1.1.**

C1.2 The species is considered, in its most recent stock assessment, to have a biomass above the limit reference point (or proxy), OR removals by the fishery under assessment are considered by scientific authorities to be negligible.

Although a data preparatory meeting was held in 2022, the stock assessment has not been completed or published at the time of assessment. Thus, the most recent stock assessment for this stock was conducted in 2014 and will be used for this assessment. The most recent analyses of the status of the Western Atlantic Skipjack Tuna stock were conducted in 2014 using catch data to

2013. Specific limit reference points are not in place for this stock, but managers currently consider that this stock is not likely to be overfished (ICCAT 2019). Therefore, despite ICCAT not employing an explicit limit reference point in managing this stock, the stock biomass is considered to be above BMSY as of the most recent stock assessment. **The stock passes Clause C1.2.**

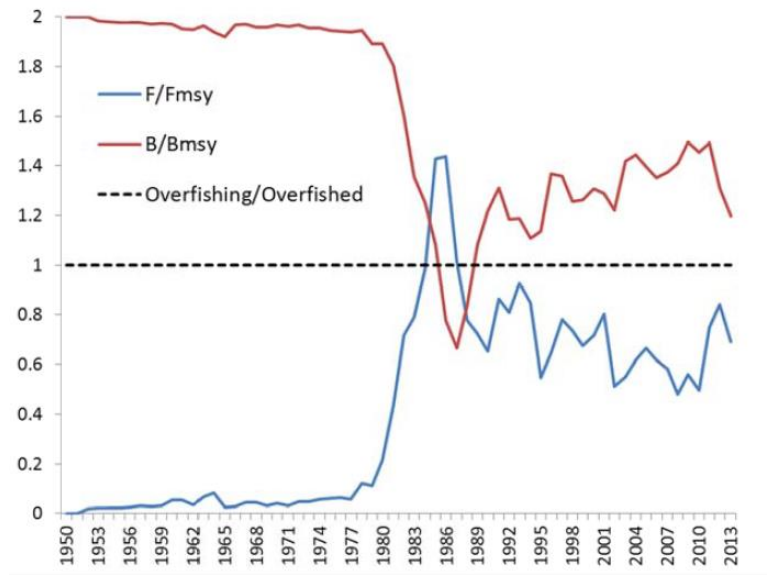


Figure 2. ASPIC estimates of relative fishing mortality and relative biomass for western Atlantic Skipjack Tuna. Source: ICCAT 2014.

References

- ICCAT 2022. Report of the 2022 Skipjack Tuna Data Preparatory Meeting. 21-25 February 2022. https://www.iccat.int/Documents/meetings/docs/2022/REPORTS/2022_SKJ_DP_ENG.pdf
- ICCAT 2019 SCRS Report (Skipjack tuna): https://www.iccat.int/Documents/SCRS/ExecSum/SKJ_ENG.pdf
- ICCAT 2014. Report of the 2014 ICCAT east and west Atlantic skipjack stock assessment meeting: https://www.iccat.int/Documents/SCRS/DetRep/SKJ_SA_ENG.pdf

Links

MarinTrust Standard clause	1.3.2.2
FAO CCRF	7.5.3
GSSI	D.3.04, D5.01