



MarinTrust Standard V2

By-product Fishery Assessment Report Template

MarinTrust Programme

Unit C, Printworks

22 Amelia Street

London

SE17 3BZ

E: standards@marin-trust.com

T: +44 2039 780 819

Table 1 Application details and summary of the assessment outcome

Fishery Under Assessment	Species:	Cod (<i>Gadus morhua</i>)
	Geographical area:	FAO Fishing Area 27 (Northeast Atlantic)
	Country of origin of the product:	Uk & Ireland
	Stock:	Cod (<i>Gadus morhua</i>) in subareas 1 and 2 (Northeast Arctic)
Date	26/05/2021	
Report Code	BP75	
Assessor	Virginia Polonio	
Country of origin of the product - PASS	Uk & Ireland	
Country of origin of the product - FAIL		

Application details and summary of the assessment outcome			
Name:			
Address:			
Country: UK & Ireland		Zip:	
Tel. No.:		Fax. No.:	
Email address:		Applicant Code:	
Key Contact:		Title:	
Certification Body Details			
Name of Certification Body:		Global Trust Certification	
Assessor	Peer Reviewer	Assessment Days	Initial/Surveillance/ Re-approval
Virginia Polonio	Geraldine Criquet	0.5	Initial
Assessment Period	2021		

Scope Details	
Main Species	Cod (<i>Gadus morhua</i>)
Stock	Cod (<i>Gadus morhua</i>) in subareas 1 and 2 (Northeast Arctic)
Fishery Location	FAO Fishing Area 27 (Northeast Atlantic)
Management Authority (Country/ State)	Icelandic Directorate of Fisheries and EU
Gear Type(s)	Demersal trawls, gillnets , longlines
Outcome of Assessment	
Peer Review Evaluation	Agree with assessor's determination
Recommendation	APPROVED

Table 2. Assessment Determination

Assessment Determination
<p>If any species is categorised as Endangered or Critically Endangered on IUCN’s Red List, or if it appears in the CITES appendices, it cannot be approved for use as MARINTRUST raw material. Cod (<i>Gadus morhua</i>) does not appear as Endangered or Critically Endangered on IUCN’s Red List, nor does it appear in CITES appendices; therefore, Cod (<i>Gadus morhua</i>) in subareas 1 and 2 (Northeast Arctic) is eligible for approval for use as MARINTRUST by-product raw material.</p> <p>At the 46th meeting of the Joint Russian–Norwegian Fisheries Commission (JRNFC) in October 2016, the previously used management plan was amended, and the current plan is as follows: The TAC is calculated as the average catch predicted for the coming 3 years, using the target level of exploitation (Ftr). The target level of exploitation is calculated according to the spawning-stock biomass (SSB) in the first year of the forecast as follows: - if $SSB < Bpa$, then $Ftr = SSB / Bpa \times FMSY$; - if $Bpa \leq SSB \leq 2 \times Bpa$, then $Ftr = FMSY$; - if $2 \times Bpa < SSB < 3 \times Bpa$, then $Ftr = FMSY \times (1 + 0.5 \times (SSB - 2 \times Bpa) / Bpa)$; - if $SSB \geq 3 \times Bpa$, then $Ftr = 1.5 \times FMSY$; where $FMSY = 0.40$ and $Bpa = 460,000$ tonnes. If the spawning-stock biomass in the present year, the previous year, and each of the three years of prediction is above Bpa, the TAC should not be changed by more than $\pm 20\%$ compared with the previous year’s TAC. In this case, Ftr should however not be below 0.30. In 2014, JNRFC decided that from 2015 onwards, Norway and Russia can transfer to or borrow from the following year up to 10% of the country’s quota. Therefore, there are reference points defined for this stock and it has been assessed under category C.</p> <p>Removals of the species are considered in the last stock assessment and it PASSES clause C1.1. In the last stock assessment the biomass is above reference points, therefore it PASSES clause C 1.2.</p> <p>In order to be approved, the stock assessed must pass Clauses C 1.1 and C1.2; therefore, as this is the case here, Cod (<i>Gadus morhua</i>) in subareas 1 and 2 (Northeast Arctic) covered by this report is APPROVED for the production of fishmeal and fish oil under the current MARINTRUST v2 by-product standard.</p>
Fishery Assessment Peer Review Comments
<p>The assessor correctly classified Northeast Arctic cod stock as category C, reference points are defined to assess status of the stock.</p> <p>Fishery removals are included in the stock assessment process so the stock PASSES Clause C1.1. The stock is considered, in its most recent stock assessment, to have a biomass well above the limit reference point so and it PASSES Clause C1.2.</p> <p>Therefore, the peer reviewer agrees with the assessor’s determination that the fishery passes both Clauses C1.1 and C1.2, so Northeast Arctic cod is thus approved.</p>
S
Empty space for signature or notes

Species Categorisation

NB: If any species is categorised as Endangered or Critically Endangered on the IUCN Red List, or if it appears in CITES Appendix 1, it **cannot** be approved for use as an MARINTRUST raw material.

IUCN Red list Category

By-product material from a species listed by IUCN (the International Union for Conservation of Nature) under the Red List for the following categories shall immediately fail the assessment;

- EXTINCT (E) AND EXTINCT IN THE WILD (EW)
- CRITICALLY ENDANGERED (CR) facing an extremely high risk of extinction in the wild.
- ENDANGERED (EN) facing a very high risk of extinction in the wild.

By-product material may be used from the following categories provided that all clauses in the MarinTrust standard are passed.

- VULNERABLE (VU) facing a high risk of extinction in the wild.
- NEAR THREATENED (NT) does not qualify for above now, but is close or is likely to qualify for, a threatened category in the near future.
- LEAST CONCERN (LC) Widespread and abundant.
- DATA DEFICIENT (DD) and NOT EVALUATED (NE)

Table 3 Species Categorisation Table

Common name	Latin name	Stock	Management	Category	IUCN Red List Category ¹	CITES Appendix 1 ²
Cod	<i>Gadus morhua</i>	Cod (<i>Gadus morhua</i>) in subareas 1 and 2 (Northeast Arctic)	Norwegian–Russian Fisheries Commission	C	Europe: LC	Not listed

¹ <https://www.iucnredlist.org/>

² <https://cites.org/eng/app/appendices.php>

CATEGORY C SPECIES

In a whole fish assessment, Category C species are those which make up less than 5% of landings, but which are subject to a species-specific management regime. In most cases this will be because they are a commercial target in a fishery other than the one under assessment.

Clause C1 should be completed for **each** Category C species. If there are no Category C species in the fishery under assessment, this section can be deleted. Where a species fails this Clause, it should be assessed as a Category D species instead.

Species Name		Cod (<i>Gadus morhua</i>)	
C1	Category C Stock Status - Minimum Requirements		
	C1.1	Fishery removals of the species in the fishery under assessment are included in the stock assessment process, OR are considered by scientific authorities to be negligible.	Yes
	C1.2	The species is considered, in its most recent stock assessment, to have a biomass above the limit reference point (or proxy), OR removals by the fishery under assessment are considered by scientific authorities to be negligible.	Yes
Clause outcome:			PASS
<p>C1.1 Fishery removals of the species in the fishery under assessment are included in the stock assessment process, OR are considered by scientific authorities to be negligible.</p> <p>The input data in the stock assessment are as follows: Commercial catches (international landings, ages and length frequencies from catch sampling); four survey indices (Joint bottom trawl survey Barents Sea, Feb–Mar (BS-NoRu-Q1 (BTr)); Joint acoustic survey Barents Sea and Lofoten, Feb–Mar (BS-NoRu-Q1 (Aco)); Russian bottom trawl survey, October– December (RU-BTr-Q4)); Joint Ecosystem survey (Eco-NoRu-Q3 (Btr)); annual maturity data from the four surveys; natural mortalities from annual stomach sampling. Discarding is considered negligible in recent years. Bycatch is included. Therefore, removals are considered in the stock assessment and the stock PASSES clause C1.1</p> <p>C1.2 The species is considered, in its most recent stock assessment, to have a biomass above the limit reference point (or proxy), OR removals by the fishery under assessment are considered by scientific authorities to be negligible.</p> <p>The spawning-stock biomass (SSB) has been above MSY Btrigger since 2002. The SSB reached a peak in 2013 and now shows a downward trend. Fishing mortality (F) was reduced from well above Flim in 1997 to below FMSY in 2008. In the last stock assessment has been above FMSY. There has been no strong recruitment since the 2004- and 2005-year classes.</p>			

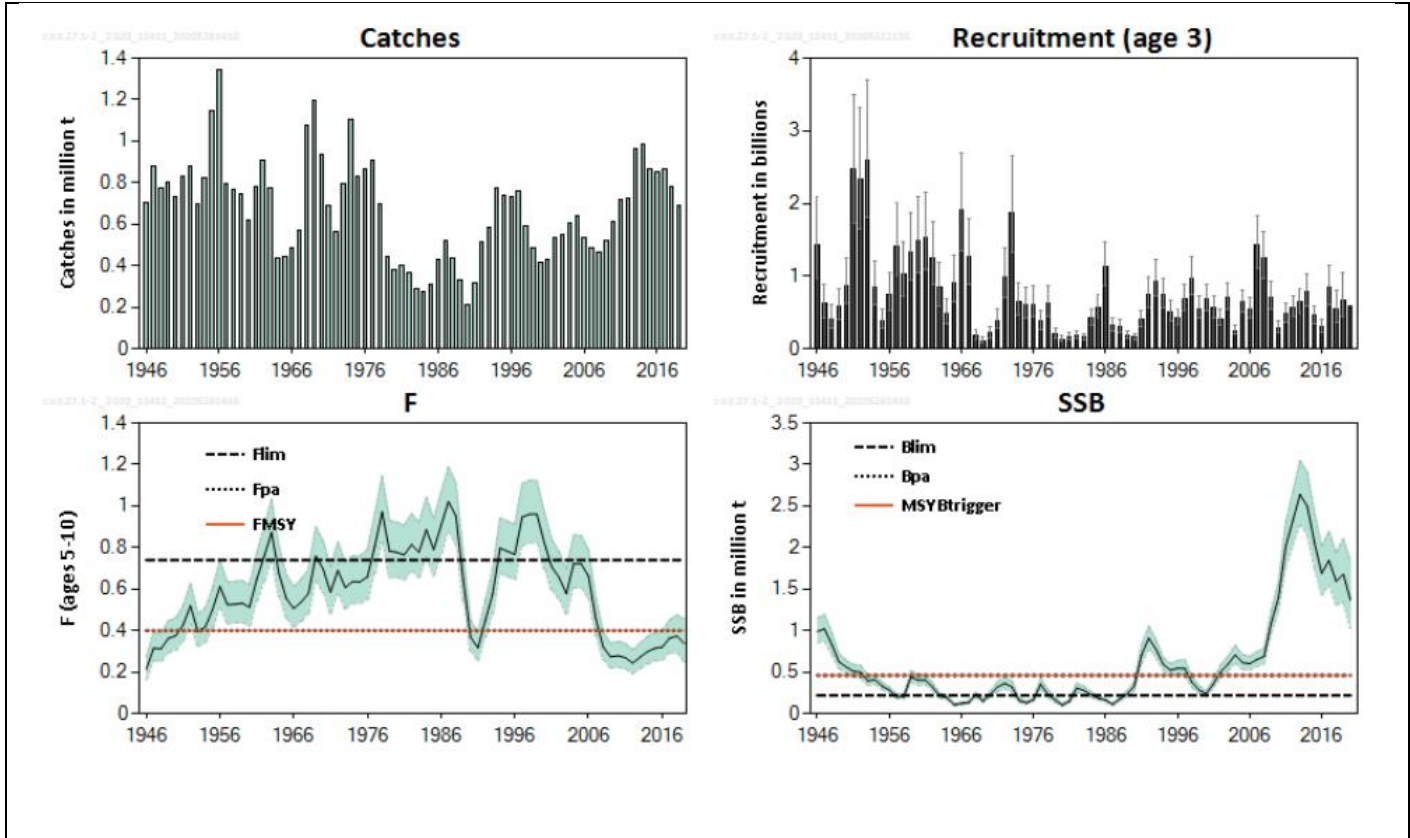


Figure 1. Cod in subareas 1 and 2 (Northeast Arctic). Catch, recruitment, F, and SSB. Recruitment, F, and SSB have confidence intervals (95%) in the plot. For this stock, FMGT ranges from 0.40 to 0.60 (not shown) and there are two SSBMGT values (460 000 tonnes and 920 000 tonnes). Stock and exploitation status ICES assesses that fishing pressure on the stock is above FMSY and between Flim and Fpa and Flim, while the spawning stock size is above MSY Btrigger, Bpa, and Blim. Source: ICES 2020

ICES assess that fishing pressure on the stock is below FMSY, Fpa and Flim, while the spawning stock size is above MSY Btrigger, Bpa, and Blim (Table 1).

Table 1. Cod in subareas 1 and 2 (Northeast Arctic). State of the stock and the fishery relative to reference points. Source: ICES 2020

		Fishing pressure			Stock size		
		2017	2018	2019	2018	2019	2020
Maximum sustainable yield	F_{MSY}	✓	✓	✓ Below	$B_{trigger}$	✓	✓ Above trigger
Precautionary approach	F_{pa}, F_{lim}	✓	✓	✓ Harvested sustainably	B_{pa}, B_{lim}	✓	✓ Full reproductive capacity
Management plan	F_{MGT}	✓	✓	✓ Below	B_{MGT}	✓	✓ Above

Therefore, the species is considered, in its most recent stock assessment, to have a biomass above the limit reference point (or proxy) and it PASSES clause C 1.2

References

ICES. 2019. Cod (*Gadus morhua*) in subareas 1 and 2 (Northeast Arctic). In Report of the ICES Advisory Committee, 2019. ICES Advice 2019, cod.27.1-2, <https://doi.org/10.17895/ices.advice.4710>

ICES. 2020. Cod (*Gadus morhua*) in subareas 1 and 2 (Northeast Arctic). In Report of the ICES Advisory Committee, 2020. ICES Advice 2020, cod.27.1-2. <https://doi.org/10.17895/ices.advice.5909>

Links

MARINTRUST Standard clause	1.3.2.2
FAO CCRF	7.5.3
GSSI	D.3.04, D5.01