



MarinTrust Standard V2

By-product Fishery Assessment Report Template

MarinTrust Programme

Unit C, Printworks

22 Amelia Street

London

SE17 3BZ

E: standards@marin-trust.com

T: +44 2039 780 819

Table 1 Application details and summary of the assessment outcome

Fishery Under Assessment	Species:	Plaice <i>Pleuronectes platessa</i>
	Geographical area:	FAO Fishing Area 27 (Northeast Atlantic)
	Country of origin of the product:	Denmark
	Stock:	ICES Division 7.d (eastern English Channel)
Date	May 2021	
Report Code	BP67	
Assessor	Conor Donnelly	
Country of origin of the product - PASS	Denmark	
Country of origin of the product - FAIL		

Application details and summary of the assessment outcome			
Name:			
Address:			
Country: Denmark		Zip:	
Tel. No.:		Fax. No.:	
Email address:		Applicant Code:	
Key Contact:		Title:	
Certification Body Details			
Name of Certification Body:		Global Trust Certification	
Assessor	Peer Reviewer	Assessment Days	Initial/Surveillance/Re-approval
Conor Donnelly	Virginia Polonio	0.5	
Assessment Period	2021		

Scope Details	
Main Species	Plaice <i>Pleuronectes platessa</i>
Stock	ICES Division 7.d (eastern English Channel)
Fishery Location	FAO Fishing Area 27 (Northeast Atlantic)
Management Authority (Country/ State)	EU
Gear Type(s)	Beam trawl, otter trawl, trammel nets, other gears ¹
Outcome of Assessment	
Peer Review Evaluation	Agree with assessor's determination
Recommendation	Approve

Table 2. Assessment Determination

Assessment Determination
<p>If any species is categorised as Endangered or Critically Endangered on IUCN's Red List, or if it appears in the CITES appendices, it cannot be approved for use as MARINTRUST raw material. Plaice does not appear as Endangered or Critically Endangered on IUCN's Red List, nor does it appear in CITES appendices; therefore, plaice in ICES division 7.d (eastern English Channel stock) is eligible for approval for use as MARINTRUST by-product raw material.</p> <p>The species has species-specific management plan and reference points are defined to assess the stock status, therefore, the stock has been assessed under category C.</p> <p>Fishery removals of the stock are considered in the ICES stock assessment process so the stock PASSES Clause C1.1.</p> <p>The stock is above its B_{lim} reference point; therefore, the stock PASSES Clause C1.2.</p> <p>In order to be approved, the stock assessed must pass both Clause C1.1 and C1.2; therefore, as this is the case here, by-product covered by this report is APPROVED for the production of fishmeal and fish oil under the current MARINTRUST v2 by-product standard.</p>
Fishery Assessment Peer Review Comments
<p>The stock has been correctly classified and assessed under category C.</p> <p>Fisheries removals are considered in the stock assessment and the biomass is above reference points. Therefore, it is approved for the production of fishmeal and fish oil under the current MARINTRUST v2 by-product standard.</p> <p>PR agrees with assessor's determination.</p>
Notes for On-site Auditor

¹ ICES. 2019. Plaice (*Pleuronectes platessa*) in Division 7.d (eastern English Channel). In Report of the ICES Advisory Committee, 2019. ICES Advice 2019, ple.27.7d, <https://doi.org/10.17895/ices.advice.4871>

Species Categorisation

NB: If any species is categorised as Endangered or Critically Endangered on the IUCN Red List, or if it appears in CITES Appendix 1, it **cannot** be approved for use as an MARINTRUST raw material.

IUCN Red list Category

By-product material from a species listed by IUCN (the International Union for Conservation of Nature) under the Red List for the following categories shall immediately fail the assessment;

- EXTINCT (E) AND EXTINCT IN THE WILD (EW)
- CRITICALLY ENDANGERED (CR) facing an extremely high risk of extinction in the wild.
- ENDANGERED (EN) facing a very high risk of extinction in the wild.

By-product material may be used from the following categories provided that all clauses in the MarinTrust standard are passed.

- VULNERABLE (VU) facing a high risk of extinction in the wild.
- NEAR THREATENED (NT) does not qualify for above now, but is close or is likely to qualify for, a threatened category in the near future.
- LEAST CONCERN (LC) Widespread and abundant.
- DATA DEFICIENT (DD) and NOT EVALUATED (NE)

Table 3 Species Categorisation Table

Common name	Latin name	Stock	Management	Category	IUCN Red List Category ²	CITES Appendix 1 ³
Plaice	<i>Pleuronectes platessa</i>	ICES Division 7.d	EU CFP	C	Least Concern	Not listed

² <https://www.iucnredlist.org/>

³ <https://cites.org/eng/app/appendices.php>

CATEGORY C SPECIES

In a whole fish assessment, Category C species are those which make up less than 5% of landings, but which are subject to a species-specific management regime. In most cases this will be because they are a commercial target in a fishery other than the one under assessment.

Clause C1 should be completed for **each** Category C species. If there are no Category C species in the fishery under assessment, this section can be deleted. Where a species fails this Clause, it should be assessed as a Category D species instead.

Species Name		Plaice, <i>Pleuronectes platessa</i>	
C1	Category C Stock Status - Minimum Requirements		
	C1.1	Fishery removals of the species in the fishery under assessment are included in the stock assessment process, OR are considered by scientific authorities to be negligible.	Yes
	C1.2	The species is considered, in its most recent stock assessment, to have a biomass above the limit reference point (or proxy), OR removals by the fishery under assessment are considered by scientific authorities to be negligible.	Yes
			Clause outcome: Pass
<p>C1.1 Fishery removals of the species in the fishery under assessment are included in the stock assessment process, OR are considered by scientific authorities to be negligible.</p> <p>The stock assessment uses commercial catches in the stock assessment model and the forecast (ICES. 2019). The commercial catch data comprises international landings, with age frequencies from catch sampling covering 83% of the landings). The assessment data is also informed by two survey indices (UK-BTS, FR-GFS).</p> <p>Fishery removals of the species in the fishery under assessment are included in the stock assessment process. Clause C1.1 is met.</p> <p>C1.2 The species is considered, in its most recent stock assessment, to have a biomass above the limit reference point (or proxy), OR removals by the fishery under assessment are considered by scientific authorities to be negligible.</p> <p>Plaice in ICES division 7.d, is assessed annually by the Working Group on the Assessment of Demersal Stocks in the North Sea and Skagerrak (WGNSSK) and the most recent stock assessment was published in June 2020 (ICES. 2020).</p> <p>Stock biomass has shown an increase after a decreasing trend in recent years and is above the target reference point, $MSY B_{trigger}$, and above the limit reference point, B_{lim} (see figure below). Fishing mortality has been increasing in recent years and has increased to above F_{MSY} in 2020.</p>			

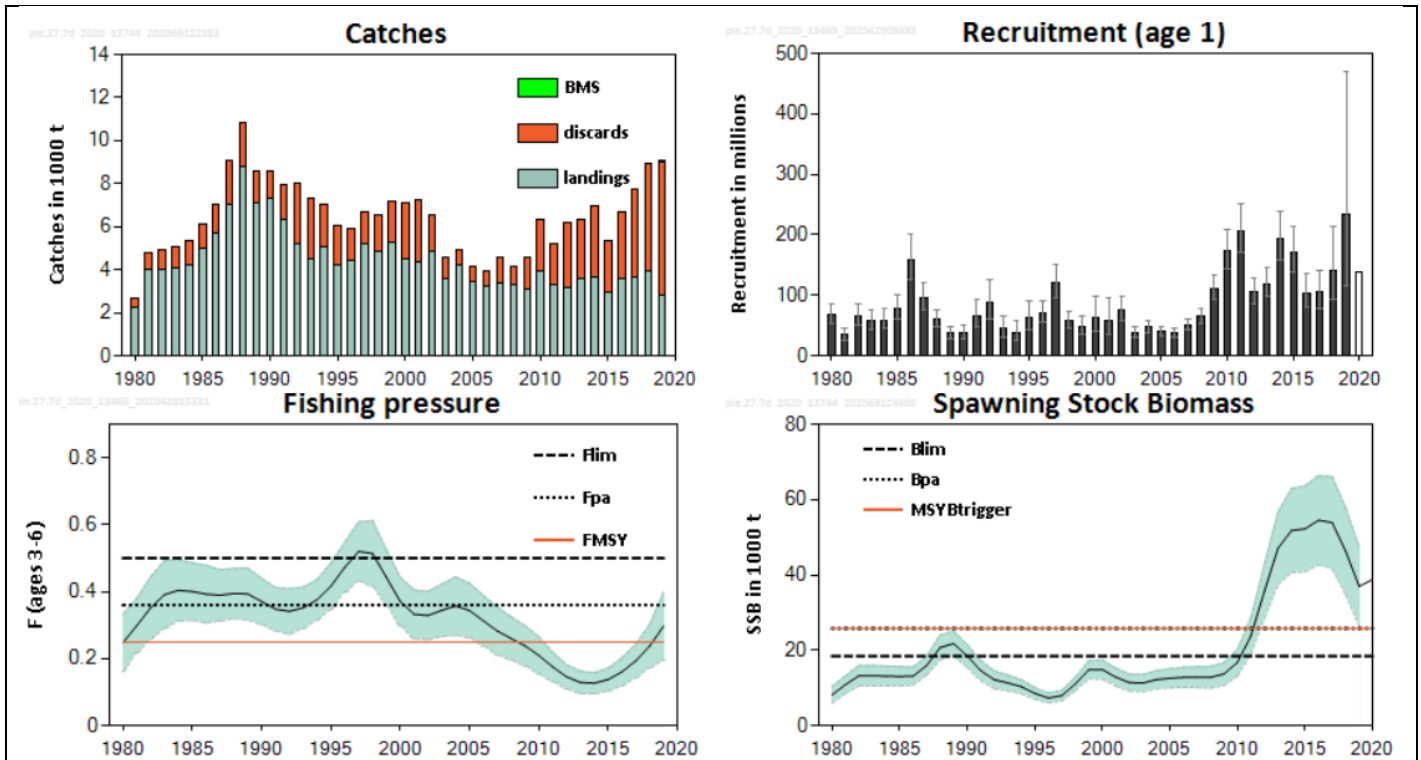


Figure 1. PlaiCe in Division 7.d. Summary of the stock assessment. Predicted values of recruitment are not shaded. Shaded areas (F, SSB) and error bars (R) indicate ± 2 standard errors (approximately 95% confidence intervals). The assumed recruitment is unshaded. Discard data are only available from 2006; values prior to that are model estimates. Landings below minimum conservation reference size (BMS) are those officially reported in logbooks (source: ICES. 2020)

The stock status relative to its reference points is shown below:

Table 3. PlaiCe in Division 7.d. State of the stock and the fishery relative to reference points (source: ICES. 2020).

	Fishing pressure			Stock size			
		2017	2018	2019	2018	2019	2020
Maximum sustainable yield	F_{MSY}	✓	✓	✗ Above	MSY	✓	✓ Above trigger
Precautionary approach	F_{pa}, F_{lim}	✓	✓	✓ Harvested sustainably	B_{pa}, B_{lim}	✓	✓ Full reproductive capacity
Management plan	F_{MGT}	✓	✓	✓ Within range	B_{MGT}	✓	✓ Above trigger

PlaiCe in ICES division 7.d, in its most recent stock assessment, has a biomass above the limit reference point. **Clause C1.2 is met.**

References

ICES. 2020. PlaiCe (*Pleuronectes platessa*) in Division 7.d (eastern English Channel). In Report of the ICES Advisory Committee, 2020. ICES Advice 2020, ple.27.7d. <https://doi.org/10.17895/ices.advice.5873>
 ICES. 2019. PlaiCe (*Pleuronectes platessa*) in Division 7.d (eastern English Channel). In Report of the ICES Advisory Committee, 2019. ICES Advice 2019, ple.27.7d, <https://doi.org/10.17895/ices.advice.4871>

Links

MARINTRUST Standard clause	1.3.2.2
FAO CCRF	7.5.3
GSSI	D.3.04, D5.01