



MarinTrust Standard V2

By-product Fishery Assessment Report Template

MarinTrust Programme

Unit C, Printworks

22 Amelia Street

London

SE17 3BZ

E: standards@marin-trust.com

T: +44 2039 780 819

Table 1 Application details and summary of the assessment outcome

Fishery Under Assessment	Species:	Saithe, <i>Pollachius virens</i>
	Geographical area:	FAO Area 27 Atlantic Northeast, ICES Division 5.b (Faroes grounds)
	Country of origin of the product:	Denmark
	Stock:	Saithe in ICES Division 5.b (Faroes grounds)
Date	6 May 2021	
Report Code	BP63	
Assessor	Geraldine Criquet	
Country of origin of the product - PASS	Denmark	
Country of origin of the product - FAIL	NA	

Application details and summary of the assessment outcome			
Name: Marine Ingredients Denmark: FFSkagen, TripleNine			
Address:			
Country: Denmark		Zip:	
Tel. No.:		Fax. No.:	
Email address:		Applicant Code:	
Key Contact:		Title:	
Certification Body Details			
Name of Certification Body:		Global Trust Certification	
Assessor	Peer Reviewer	Assessment Days	Initial/Surveillance/ Re-approval
Geraldine Criquet	Virginia Polonio	0.5	
Assessment Period	May 2021		

Scope Details	
Main Species	Saithe, <i>Pollachius virens</i>
Stock	Saithe in ICES Division 5.b (Faroes grounds)
Fishery Location	FAO Area 27 Atlantic Northeast ICES Division 5.b (Faroes grounds)
Management Authority (Country/ State)	EU/Common Fisheries Policy and Denmark
Gear Type(s)	Trawls
Outcome of Assessment	
Peer Review Evaluation	Agree with assessor's determination
Recommendation	APPROVED

Table 2. Assessment Determination

Assessment Determination
<p>If any species is categorised as Endangered or Critically Endangered on IUCN's Red List, or if it appears in the CITES appendices, it cannot be approved for use as MARIN TRUST raw material. Saithe (<i>Pollachius virens</i>) is not listed as Endangered or Critically Endangered on IUCN's Red List, nor it is listed in CITES appendices. Therefore, saithe (<i>Pollachius virens</i>) in ICES Division 5.b (Faroes grounds) is eligible for approval for use as MARIN TRUST by-product raw material.</p> <p>Saithe in ICES Division 5.b is subject to specific management, an effort management system has been in place since 1996a, and reference points are available to assess the stock status relative to. Therefore, the stock is categorised as Category C.</p> <p>Fishery removals of the stock are considered in the various stock assessment processes so it PASSES Clause C1.1.</p> <p>According the most recent ICES advice, the spawning stock biomass is above B_{lim} and $MSYB_{trigger}$, it PASSES Clause C1.2.</p> <p>In order to be approved, the stock under assessment must pass both Clauses C1.1 and C1.2. Saithe (<i>Pollachius virens</i>) in ICES Division 5.b (Faroes grounds) passes both Clauses C1.1 and C1.2, and therefore is APPROVED by the assessor for the production of fishmeal and fish oil under the current Marin Trust v.2.0 by-product Standard.</p>
Fishery Assessment Peer Review Comments
<p>The stock has a species-specific management plan and therefore it has been correctly categorised following Marin Trust guidelines. The removals of the stock are considered in the stock assessment and the stock is above biomass reference points in the most stock assessment from 2020.</p> <p>The PR agrees with the assessor's determination and Saithe (<i>Pollachius virens</i>) in ICES Division 5.b (Faroes grounds) is approved for the production of fishmeal and fish oil under the current Marin Trust v.2.0 by-product Standard.</p>
Notes for On-site Auditor

Species Categorisation

NB: If any species is categorised as Endangered or Critically Endangered on the IUCN Red List, or if it appears in CITES Appendix 1, it **cannot** be approved for use as an MARINTRUST raw material.

IUCN Red list Category

By-product material from a species listed by IUCN (the International Union for Conservation of Nature) under the Red List for the following categories shall immediately fail the assessment;

- EXTINCT (E) AND EXTINCT IN THE WILD (EW)
- CRITICALLY ENDANGERED (CR) facing an extremely high risk of extinction in the wild.
- ENDANGERED (EN) facing a very high risk of extinction in the wild.

By-product material may be used from the following categories provided that all clauses in the MarinTrust standard are passed.

- VULNERABLE (VU) facing a high risk of extinction in the wild.
- NEAR THREATENED (NT) does not qualify for above now, but is close or is likely to qualify for, a threatened category in the near future.
- LEAST CONCERN (LC) Widespread and abundant.
- DATA DEFICIENT (DD) and NOT EVALUATED (NE)

Table 3 Species Categorisation Table

Common name	Latin name	Stock	Management	Category	IUCN Red List Category ¹	CITES Appendix 1 ²
Saithe	<i>Pollachius virens</i>	Saithe in ICES Division 5.b (Faroes grounds)	EU/Common Fisheries Policy and Denmark	C	LC	No

¹ <https://www.iucnredlist.org/>

² <https://cites.org/eng/app/appendices.php>

CATEGORY C SPECIES

In a whole fish assessment, Category C species are those which make up less than 5% of landings, but which are subject to a species-specific management regime. In most cases this will be because they are a commercial target in a fishery other than the one under assessment.

Clause C1 should be completed for **each** Category C species. If there are no Category C species in the fishery under assessment, this section can be deleted. Where a species fails this Clause, it should be assessed as a Category D species instead.

Species Name		Saithe, <i>Pollachius virens</i>	
C1	Category C Stock Status - Minimum Requirements		
	C1.1	Fishery removals of the species in the fishery under assessment are included in the stock assessment process, OR are considered by scientific authorities to be negligible.	PASS
	C1.2	The species is considered, in its most recent stock assessment, to have a biomass above the limit reference point (or proxy), OR removals by the fishery under assessment are considered by scientific authorities to be negligible.	PASS
			Clause outcome: PASS
<p>C1.1 Fishery removals of the species in the fishery under assessment are included in the stock assessment process, OR are considered by scientific authorities to be negligible.</p> <p>Commercial catches (mainly Faroes catches, ages and length frequencies from catch sampling) are included in the stock assessment process. Figure 1 shows catches for the 1961-2019 period. Therefore, the stock PASSES Clause C1.1.</p> <div style="text-align: center;"> </div>			

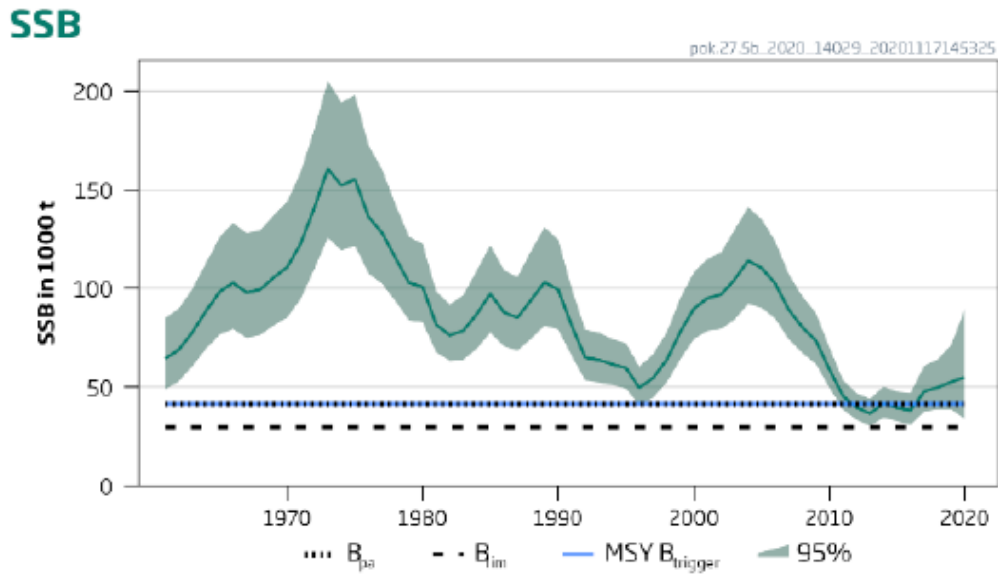


Figure 2. Saithe in ICES Division 5.b. Summary of the stock assessment. Source: ICES 2020

Table 4. Saithe in ICES Division 5.b. State of the stock and the fishery relative to reference points. Source: ICES 2020

		Fishing pressure			Stock size					
		2017	2018	2019	2018	2019	2020			
Maximum sustainable yield	F_{MSY}	✘	✘	✘	Above	$MSY B_{trigger}$	✔	✔	✔	Above trigger
Precautionary approach	F_{pa}, F_{lim}	○	○	○	Increased risk	B_{pa}, B_{lim}	✔	✔	✔	Full reproductive capacity
Management plan	F_{MGT}	—	—	—	Not applicable	B_{MGT}	—	—	—	Not applicable

Cook, R., Fernandes, P., Florin, A., Lorange, P. & Nedreaas, K. 2015. *Pollachius virens*. *The IUCN Red List of Threatened Species* 2015: e.T190304A45098360. Downloaded on 06 May 2021.

<https://www.iucnredlist.org/species/190304/45098360>

ICES. 2020. Saithe (*Pollachius virens*) in Division 5.b (Faroes grounds). *In* Report of the ICES Advisory Committee, 2020. ICES Advice 2020, pok.27.5b. <https://doi.org/10.17895/ices.advice.5932>.

<https://www.ices.dk/sites/pub/Publication%20Reports/Advice/2020/2020/pok.27.5b.pdf>

Links

MARINTRUST Standard clause	1.3.2.2
FAO CCRF	7.5.3
GSSI	D.3.04, D5.01