



MarinTrust Standard V2

By-product Fishery Assessment Report Template

MarinTrust Programme

Unit C, Printworks

22 Amelia Street

London

SE17 3BZ

E: standards@marin-trust.com

T: +44 2039 780 819

Table 1 Application details and summary of the assessment outcome

Fishery Under Assessment	Species:	Black-bellied anglerfish (<i>Lophius budegassa</i>)
	Geographical area:	FAO Major Fishing Area 27
	Country of origin of the product:	U.K. & Ireland
	Stock:	Black-bellied anglerfish (<i>Lophius budegassa</i>) in ICES Subarea 7 and divisions 8.a–b and 8.d (Celtic Seas, Bay of Biscay)
Date	April 2021	
Report Code	BP55	
Assessor	Vito Romito	
Country of origin of the product - PASS	PASS	

Application details and summary of the assessment outcome			
Name:			
Address:			
Country:		Zip:	
Tel. No.:		Fax. No.:	
Email address:		Applicant Code:	
Key Contact:		Title:	
Certification Body Details			
Name of Certification Body:		Global Trust Certification	
Assessor	Peer Reviewer	Assessment Days	Initial/Surveillance/ Re-approval
Vito Romito	Virginia Polonio	0.5	Re-approval
Assessment Period	2020		

Scope Details	
Main Species	Black-bellied anglerfish
Stock	Black-bellied anglerfish (<i>Lophius budegassa</i>) in ICES Subarea 7 and divisions 8.a–b and 8.d (Celtic Seas, Bay of Biscay)
Fishery Location	UK and Ireland
Management Authority (Country/ State)	EU Common Fisheries Policy Framework and UK Fisheries Act 2020
Gear Type(s)	Bottom trawl
Outcome of Assessment	
Peer Review Evaluation	Agree with assessor's determination
Recommendation	APPROVE

Table 2. Assessment Determination

Assessment Determination
<p>Black-bellied anglerfish (<i>Lophius budegassa</i>) is not is categorised as Endangered or Critically Endangered on the IUCN Red list nor is listed in Appendix 1 of CITES.</p> <p>The EU multiannual plan (MAP; EU, 2019) for stocks in the Western Waters and adjacent waters applies to this stock. The MAP stipulates that when the FMSY ranges are not available, fishing opportunities should be based on the best available scientific advice.</p> <p>ICES advise that when the precautionary approach is applied, catches in 2021 should be no more than 15,551 tonnes. There is a species-specific management plan and therefore, the species has been categorised as Category C. In order to approve the species must pass clauses C1.1 and C1.2.</p> <p>Therefore, Black-bellied anglerfish (<i>Lophius budegassa</i>) in ICES Subarea 7 and divisions 8.a–b and 8.d (Celtic Seas, Bay of Biscay) is APPROVED by the assessor for the production of fishmeal and fish oil under the current Marin Trust v.2.0 by-product Standard.</p>
Fishery Assessment Peer Review Comments
<p>The species has a defined management plan and it has been correctly categorised.</p> <p>Removals are considered in the stock assessment and biomass is above reference points, therefore, Black-bellied anglerfish (<i>Lophius budegassa</i>) in ICES Subarea 7 and divisions 8.a–b and 8.d (Celtic Seas, Bay of Biscay) is approved and PR agrees with the assessor’s determination.</p>
Notes for On-site Auditor

Species Categorisation

NB: If any species is categorised as Endangered or Critically Endangered on the IUCN Red List, or if it appears in CITES Appendix 1, it **cannot** be approved for use as an MARINTRUST raw material.

IUCN Redlist Category

By-product material from a species listed by IUCN (the International Union for Conservation of Nature) under the Red List for the following categories shall immediately fail the assessment;

- EXTINCT (E) AND EXTINCT IN THE WILD (EW)
- CRITICALLY ENDANGERED (CR) facing an extremely high risk of extinction in the wild.
- ENDANGERED (EN) facing a very high risk of extinction in the wild.

By-product material may be used from the following categories provided that all clauses in the MarinTrust standard are passed.

- VULNERABLE (VU) facing a high risk of extinction in the wild.
- NEAR THREATENED (NT) does not qualify for above now, but is close or is likely to qualify for, a threatened category in the near future.
- LEAST CONCERN (LC) Widespread and abundant.
- DATA DEFICIENT (DD) and NOT EVALUATED (NE)

Table 3 Species Categorisation Table

Common name	Latin name	Stock	Management	Category	IUCN Red List Category ¹	CITES Appendix 1 ²
Black-bellied anglerfish	<i>Lophius budegassa</i>	Black-bellied anglerfish (<i>Lophius budegassa</i>) in ICES Subarea 7 and divisions 8.a–b and 8.d (Celtic Seas, Bay of Biscay)	EU Common Fisheries Policy Framework and UK Fisheries Act 2020	C	DD	Not listed.

¹ <https://www.iucnredlist.org/>

² <https://cites.org/eng/app/appendices.php>

CATEGORY C SPECIES

In a whole fish assessment, Category C species are those which make up less than 5% of landings, but which are subject to a species-specific management regime. In most cases this will be because they are a commercial target in a fishery other than the one under assessment.

Clause C1 should be completed for **each** Category C species. If there are no Category C species in the fishery under assessment, this section can be deleted. Where a species fails this Clause, it may be assessed as a Category D species instead, EXCEPT if there is evidence that it is currently below the limit reference point.

Species Name		Black-bellied anglerfish (<i>Lophius budegassa</i>)	
C1	Category C Stock Status - Minimum Requirements		
	C1.1	Fishery removals of the species in the fishery under assessment are included in the stock assessment process, OR are considered by scientific authorities to be negligible.	PASS
	C1.2	The species is considered, in its most recent stock assessment, to have a biomass above the limit reference point (or proxy), OR removals by the fishery under assessment are considered by scientific authorities to be negligible.	PASS
Clause outcome:			PASS

C1.1 Fishery removals of the species in the fishery under assessment are included in the stock assessment process, OR are considered by scientific authorities to be negligible.

The stock is assessed using a survey trends-based assessment. Relative FMSY is calculated with mean-length Z approach. Input data include the combined survey index (IE-IGFS-WIBTS-Q4 and FR-EVHOE-WIBTS-Q4). Discarding is in the order of 14%. Fishery indicators include effort and LPUE trends for some of the main fleets in the fishery. Catches can be seen in the figure 1 below. **Fishery removals of the species in the fishery under assessment are included in the stock assessment process. C1.1 passes.**

C1.2 The species is considered, in its most recent stock assessment, to have a biomass above the limit reference point (or proxy), OR removals by the fishery under assessment are considered by scientific authorities to be negligible.

Catches have gradually increased since 2006. Discard data are only available since 2003. The stock size index shows a large increase in recent years. Fishing pressure has been decreasing since 2005 and is now below FMSY. Recruitment has varied without trend throughout the time-series, with high interannual variability.

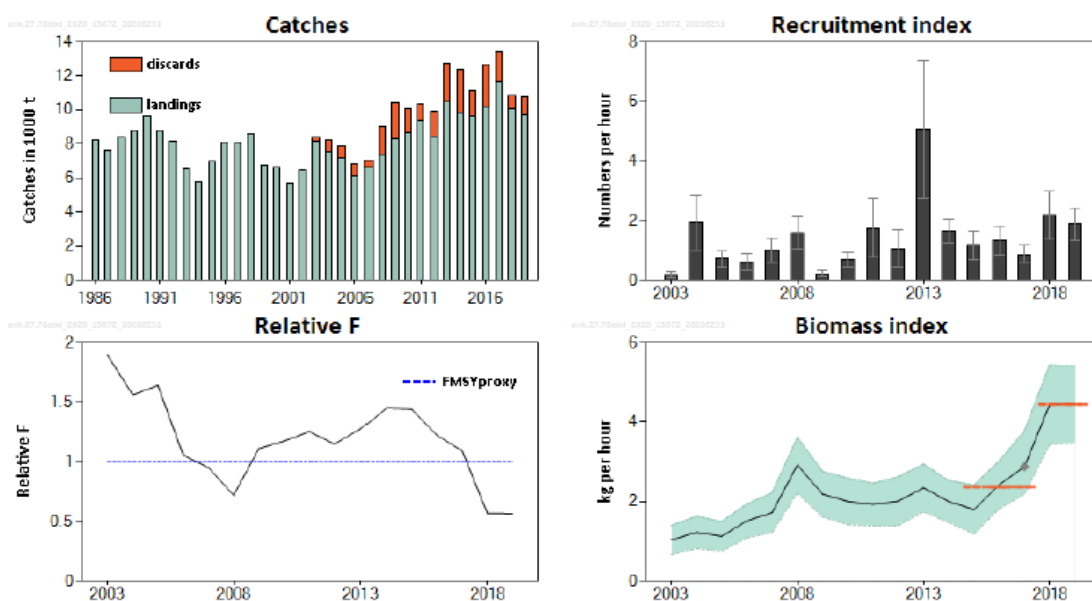


Figure 1. Black-bellied anglerfish in Subarea 7 and divisions 8.a–b and 8.d. Summary of the stock assessment. The biomass and recruitment indices from the combined surveys are displayed with confidence intervals (95%). The 2017 point in the biomass

index was modelled due to a large gap in the survey coverage. The short orange horizontal lines represent the mean biomass index in the most recent two years and the preceding three years. Source: ICES 2020.

The species is considered, in its most recent stock assessment, to have a biomass above the limit reference point. This is because the stock is clearly increasing indicating no recruitment impairment and because fishing mortality is below the FMSY proxy reference point. C1.2 passes.

References

ICES. 2020. Black-bellied anglerfish (*Lophius budegassa*) in Subarea 7 and divisions 8.a–b and 8.d (Celtic Seas, Bay of Biscay). In Report of the ICES Advisory Committee, 2020. ICES Advice 2020, ank.27.78abd. <https://doi.org/10.17895/ices.advice.5922>.

Links

MARINTRUST Standard clause	1.3.2.2
FAO CCRF	7.5.3
GSSI	D.3.04, D5.01