



MarinTrust Standard V2

By-product Fishery Assessment Report Template

MarinTrust Programme

Unit C, Printworks

22 Amelia Street

London

SE17 3BZ

E: standards@marin-trust.com

T: +44 2039 780 819

Table 1 Application details and summary of the assessment outcome

Fishery Under Assessment	Species:	White anglerfish (<i>Lophius piscatorius</i>)
	Geographical area:	FAO Major Fishing Area 27
	Country of origin of the product:	U.K. & Ireland
	Stock:	White anglerfish (<i>Lophius piscatorius</i>) in Subarea 7 and in divisions 8.a–b and 8.d (southern Celtic Seas, Bay of Biscay)
Date	April 2021	
Report Code	BP54	
Assessor	Vito Romito	
Country of origin of the product - PASS	PASS	

Application details and summary of the assessment outcome			
Name:			
Address:			
Country: U.K. & Ireland		Zip:	
Tel. No.:		Fax. No.:	
Email address:		Applicant Code:	
Key Contact:		Title:	
Certification Body Details			
Name of Certification Body:		Global Trust Certification	
Assessor	Peer Reviewer	Assessment Days	Initial/Surveillance/ Re-approval
Vito Romito	Virginia Polonio	0.5	Re-approval
Assessment Period	To April 2021		

Scope Details	
Main Species	White anglerfish (<i>Lophius piscatorius</i>)
Stock	White anglerfish (<i>Lophius piscatorius</i>) in ICES Subarea 7 and in divisions 8.a–b and 8.d (southern Celtic Seas, Bay of Biscay)
Fishery Location	UK and Ireland
Management Authority (Country/ State)	EU Common Fisheries Policy Framework and UK Fisheries Act 2020
Gear Type(s)	Bottom trawl
Outcome of Assessment	
Peer Review Evaluation	Agrees with assessor's determination
Recommendation	APPROVE

Table 2. Assessment Determination

Assessment Determination
<p>White anglerfish (<i>Lophius piscatorius</i>) is not is categorised as Endangered or Critically Endangered on the IUCN Red list nor is listed in Appendix 1 of CITES.</p> <p>The EU multiannual plan (MAP) for stocks in in the Western Waters and adjacent waters applies to this stock. The plan specifies conditions for setting fishing opportunities, depending on stock status and making use of the FMSY range for the stock.</p> <p>In accordance with the MAP, catches higher than those corresponding to FMSY can only be taken providing SSB is greater than MSY Btrigger, and one of the following conditions is met:</p> <ul style="list-style-type: none"> a) if it is necessary for the achievement of objectives of mixed fisheries; b) if it is necessary to avoid serious harm to a stock caused by intra- or inter-species stock dynamics; c) in order to limit variations in fishing opportunities between consecutive years to not more than 20%. <p>ICES consider that the FMSY range for this stock used in the MAP is precautionary.</p> <p>ICES advise that when the EU multiannual plan (MAP) for Western Waters and adjacent waters is applied, catches in 2021 that correspond to the F ranges in the MAP are between 23,320 tonnes and 45,996 tonnes. According to the MAP, catches higher than those corresponding to FMSY (34,579 tonnes) can only be taken under conditions specified in the MAP, whilst the entire range is considered precautionary when applying the ICES advice rule.</p> <p>Therefore, the species has been categorised as Category C. In order to approve the species must pass clauses C1.1 and C1.2.</p> <p>Therefore, White anglerfish (<i>Lophius piscatorius</i>) in ICES Subarea 7 and in divisions 8.a–b and 8.d (southern Celtic Seas, Bay of Biscay) is APPROVED by the assessor for the production of fishmeal and fish oil under the current Marin Trust v.2.0 by-product Standard.</p>
Fishery Assessment Peer Review Comments
<p>The fishery has a management plan in place therefore it has been correctly categorised by the assessor.</p> <p>Removals are considered in the stock assessment and the biomass is above limits. Therefore, the species is APPROVED by the assessor for the production of fishmeal and fish oil under the current Marin Trust v.2.0 by-product Standard.</p> <p>The PR agrees with assessor’s determination.</p>
Notes for On-site Auditor

Species Categorisation

NB: If any species is categorised as Endangered or Critically Endangered on the IUCN Red List, or if it appears in CITES Appendix 1, it **cannot** be approved for use as an MARINTRUST raw material.

IUCN Redlist Category

By-product material from a species listed by IUCN (the International Union for Conservation of Nature) under the Red List for the following categories shall immediately fail the assessment;

- EXTINCT (E) AND EXTINCT IN THE WILD (EW)
- CRITICALLY ENDANGERED (CR) facing an extremely high risk of extinction in the wild.
- ENDANGERED (EN) facing a very high risk of extinction in the wild.

By-product material may be used from the following categories provided that all clauses in the MarinTrust standard are passed.

- VULNERABLE (VU) facing a high risk of extinction in the wild.
- NEAR THREATENED (NT) does not qualify for above now, but is close or is likely to qualify for, a threatened category in the near future.
- LEAST CONCERN (LC) Widespread and abundant.
- DATA DEFICIENT (DD) and NOT EVALUATED (NE)

Table 3 Species Categorisation Table

Common name	Latin name	Stock	Management	Category	IUCN Red List Category ¹	CITES Appendix 1 ²
White anglerfish	<i>Lophius piscatorius</i>	White anglerfish (<i>Lophius piscatorius</i>) in ICES Subarea 7 and in divisions 8.a–b and 8.d (southern Celtic Seas, Bay of Biscay)	EU Common Fisheries Policy Framework and UK Fisheries Act 2020	C	LC	Not listed.

¹ <https://www.iucnredlist.org/>

² <https://cites.org/eng/app/appendices.php>

CATEGORY C SPECIES

In a whole fish assessment, Category C species are those which make up less than 5% of landings, but which are subject to a species-specific management regime. In most cases this will be because they are a commercial target in a fishery other than the one under assessment.

Clause C1 should be completed for **each** Category C species. If there are no Category C species in the fishery under assessment, this section can be deleted. Where a species fails this Clause, it may be assessed as a Category D species instead, EXCEPT if there is evidence that it is currently below the limit reference point.

Species Name		White anglerfish (<i>Lophius piscatorius</i>)	
C1	Category C Stock Status - Minimum Requirements		
	C1.1	Fishery removals of the species in the fishery under assessment are included in the stock assessment process, OR are considered by scientific authorities to be negligible.	Pass
	C1.2	The species is considered, in its most recent stock assessment, to have a biomass above the limit reference point (or proxy), OR removals by the fishery under assessment are considered by scientific authorities to be negligible.	Pass
			Clause outcome: PASS
<p>C1.1 Fishery removals of the species in the fishery under assessment are included in the stock assessment process, OR are considered by scientific authorities to be negligible.</p> <p>The stock is distributed in Subarea 7 and in divisions 8.a–b and 8.d (southern Celtic Seas, Bay of Biscay). The stock is managed using an age-based analytical assessment that uses catches in the model and in the forecast. Data inputs in the model include commercial landings and discards; three survey indices (combined FR-EVHOE-WIBTS-Q4 / IE-IGFS-WIBTS-Q4 index, SP-PORC-WIBTS-Q3 and Irish Monkfish Survey); weights- and numbers-at-age derived from catch and survey length-frequency distribution. Discards are available from 2003 and are included in the assessment and forecast. Catches are also indicated in the figure 1 below. Fishery removals of the species in the fishery under assessment are included in the stock assessment process. C1.1. passes.</p>			
<p>C1.2 The species is considered, in its most recent stock assessment, to have a biomass above the limit reference point (or proxy), OR removals by the fishery under assessment are considered by scientific authorities to be negligible.</p> <p>The spawning-stock biomass (SSB) has been increasing since 2005 and is estimated to be the highest in the time-series in 2019. Fishing mortality (F) has been above FMSY but has trended downwards since the mid-2000s and is now lower than FMSY. Recruitment (R) has been variable over the time-series.</p>			

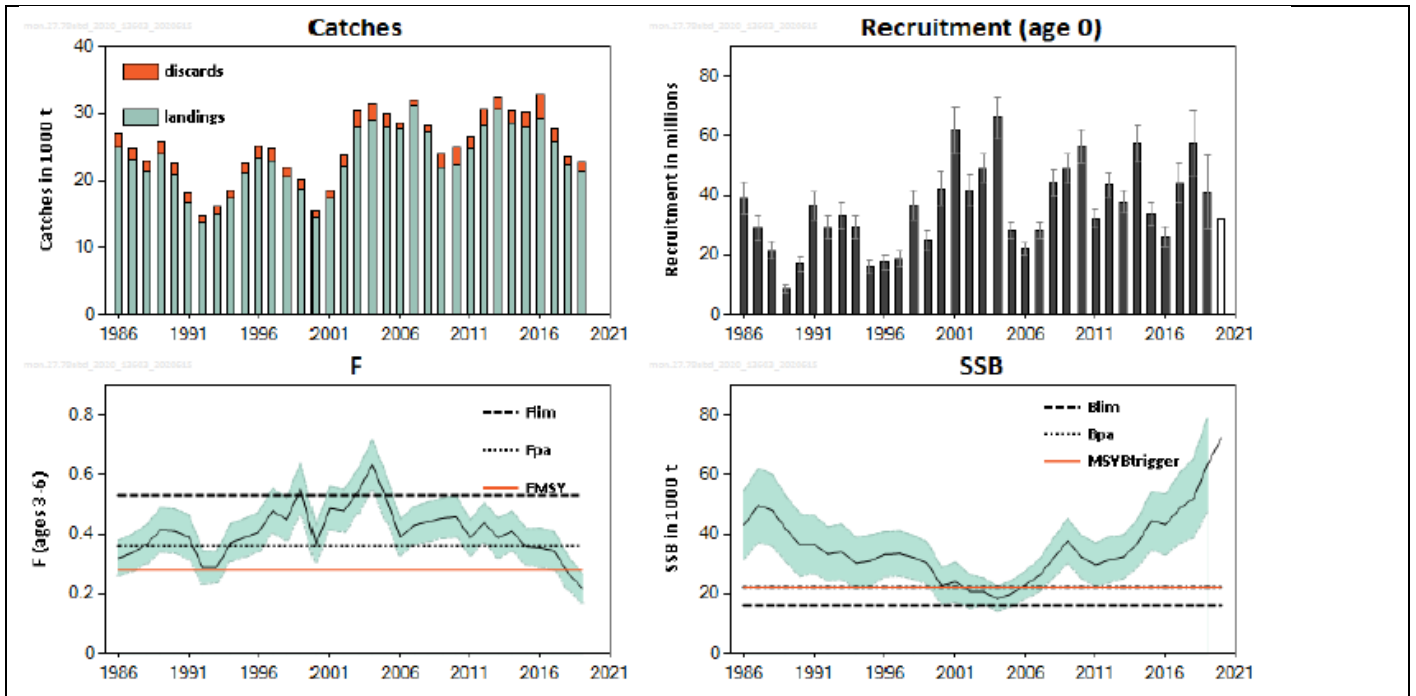


Figure 1. White anglerfish in Subarea 7 and in divisions 8.a–b and 8.d. Summary of the stock assessment (weights in thousand tonnes). Discard observations are available only since 2003 and estimated for prior years. The plots for recruitment (R), fishing mortality (F), and spawning-stock biomass (SSB) indicate 95% confidence limits. Assumed recruitment values are unshaded. Source: ICES 2020.

The species is considered, in its most recent stock assessment, to have a biomass above the limit reference point. C1.2. passes.

References

ICES. 2020. White anglerfish (*Lophius piscatorius*) in Subarea 7 and in divisions 8.a–b and 8.d (southern Celtic Seas, Bay of Biscay). In Report of the ICES Advisory Committee, 2020. ICES Advice 2020, mon.27.78abd. <https://doi.org/10.17895/ices.advice.5925>.

Links

MARINTRUST Standard clause	1.3.2.2
FAO CCRF	7.5.3
GSSI	D.3.04, D5.01