



MarinTrust Standard V2

By-product Fishery Assessment Report Template

MarinTrust Programme

Unit C, Printworks

22 Amelia Street

London

SE17 3BZ

E: standards@marin-trust.com

T: +44 2039 780 819

Table 1 Application details and summary of the assessment outcome

Fishery Under Assessment	Species:	Plaice (<i>Pleuronectes platessa</i>)
	Geographical area:	FAO Area 27 Atlantic Northeast
	Country of origin of the product:	Denmark
	Stock:	ICES subdivisions 24–32 (Baltic Sea, excluding the Sound and Belt Seas)
Date	31/03/2021	
Report Code	BP38	
Assessor	Virginia Polonio	
Country of origin of the product - PASS	Denmark	
Country of origin of the product - FAIL	NA	

Application details and summary of the assessment outcome			
Name:			
Address:			
Country: Denmark		Zip:	
Tel. No.:		Fax. No.:	
Email address:		Applicant Code:	
Key Contact:		Title:	
Certification Body Details			
Name of Certification Body:		Global Trust Certification	
Assessor	Peer Reviewer	Assessment Days	Initial/Surveillance/ Re-approval
Virginia Polonio	Geraldine Criquet	0.5	Re-Approval
Assessment Period	March 2021		

Scope Details	
Main Species	Plaice (<i>Pleuronectes platessa</i>)
Stock	ICES subdivisions 24–32 (Baltic Sea, excluding the Sound and Belt Seas)
Fishery Location	FAO Area 27 Atlantic Northeast
Management Authority (Country/ State)	European Union through Common Fisheries Policy and Danish Directorate of Fisheries
Gear Type(s)	Beam trawls and otter trawls
Outcome of Assessment	
Peer Review Evaluation	Agree with assessor's determination
Recommendation	APPROVED

Table 2. Assessment Determination

Assessment Determination
<p>If any species is categorised as Endangered or Critically Endangered on the IUCN Red List, or if it appears in the CITES appendices, it cannot be approved for use as Marin Trust raw material. Plaice does not appear as Endangered or Critically Endangered on the IUCN Red List, nor does it appear in the CITES appendices; therefore, plaice is eligible for approval for use as Marin Trust raw material.</p> <p>An EU multiannual management plan (MAP) has been agreed by the EU for this stock (EU, 2018). There is no agreement with Norway regarding this plan and it is not used as the basis of the advice for this shared stock. ICES was requested by the EC to provide advice based on the MSY approach, and to include the MAP as a catch option. There are reference points defined related to this stock and therefore, the stock has been assessed under Category C.</p> <p>In the last stock assessment removals are considered and the stock is above the proxy reference point, therefore the fishery PASSES clauses C1.1 and C1.2.</p> <p>Plaice in subdivisions 24–32 (Baltic Sea, excluding the Sound and Belt Seas) is APPROVED by the assessor for the production of fishmeal and fish oil under the Marin Trust v 2.0 by-products standard.</p>
Fishery Assessment Peer Review Comments
<p>The assessor correctly classified Baltic Sea (excluding the Sound and Belt Seas) plaice stock as category C, this stock is managed and reference points are defined.</p> <p>Fishery removals are considered in the stock assessment process. The most recent stock assessment shows that the stock is above the proxy reference point. Therefore, the stock is considered to have a biomass above the limit reference point.</p> <p>The Baltic Sea (excluding the Sound and Belt Seas) plaice stock passes both Clauses C1.1 and C1.2 and is therefore approved under the Marin Trust v 2.0 by-products standard.</p>
Notes for On-site Auditor
Empty space for notes

Species Categorisation

NB: If any species is categorised as Endangered or Critically Endangered on the IUCN Red List, or if it appears in CITES Appendix 1, it **cannot** be approved for use as an MARINTRUST raw material.

IUCN Redlist Category

By-product material from a species listed by IUCN (the International Union for Conservation of Nature) under the Red List for the following categories shall immediately fail the assessment;

- EXTINCT (E) AND EXTINCT IN THE WILD (EW)
- CRITICALLY ENDANGERED (CR) facing an extremely high risk of extinction in the wild.
- ENDANGERED (EN) facing a very high risk of extinction in the wild.

By-product material may be used from the following categories provided that all clauses in the MarinTrust standard are passed.

- VULNERABLE (VU) facing a high risk of extinction in the wild.
- NEAR THREATENED (NT) does not qualify for above now, but is close or is likely to qualify for, a threatened category in the near future.
- LEAST CONCERN (LC) Widespread and abundant.
- DATA DEFICIENT (DD) and NOT EVALUATED (NE)

Table 3 Species Categorisation Table

Common name	Latin name	Stock	Management	Category	IUCN Red List Category ¹	CITES Appendix 1 ²
Plaice	<i>Pleuronectes platessa</i>	ICES subdivisions 24–32 (Baltic Sea, excluding the Sound and Belt Seas)	EU (CFP) and Danish Directorate of Fisheries	C	LC	No

¹ <https://www.iucnredlist.org/>

² <https://cites.org/eng/app/appendices.php>

CATEGORY C SPECIES

In a whole fish assessment, Category C species are those which make up less than 5% of landings, but which are subject to a species-specific management regime. In most cases this will be because they are a commercial target in a fishery other than the one under assessment.

Clause C1 should be completed for **each** Category C species. If there are no Category C species in the fishery under assessment, this section can be deleted. Where a species fails this Clause, it may be assessed as a Category D species instead, EXCEPT if there is evidence that it is currently below the limit reference point.

Species Name		Plaice (<i>Pleuronectes platessa</i>)	
C1	Category C Stock Status - Minimum Requirements		
	C1.1	Fishery removals of the species in the fishery under assessment are included in the stock assessment process, OR are considered by scientific authorities to be negligible.	PASS
	C1.2	The species is considered, in its most recent stock assessment, to have a biomass above the limit reference point (or proxy), OR removals by the fishery under assessment are considered by scientific authorities to be negligible.	PASS
			Clause outcome: PASS
<p>C1.1 Fishery removals of the species in the fishery under assessment are included in the stock assessment process, OR are considered by scientific authorities to be negligible.</p> <p>The data used in the stock assessment are: commercial catches; two survey indices (2002–2019 BITS–Q1 and 2002–2018 BITS–Q4); averaged maturity data (2008–2018 BITS–Q1); natural mortalities are fixed and assumed to be 0.2 (age 1) and 0.1 (age 2+). Discards and bycatch Used to provide advice. Discard estimates from the main fleets are included in the assessment from 2002 onwards; however, the estimations of the first years (2002–2005) are considered uncertain.</p> <p>Therefore, fishery removals of the species in the fishery under assessment are included in the stock assessment process and the species PASSES clause C1.1.</p> <p>C1.2 The species is considered, in its most recent stock assessment, to have a biomass above the limit reference point (or proxy), OR removals by the fishery under assessment are considered by scientific authorities to be negligible.</p> <p>The assessment is indicative of trend only. The relative spawning-stock biomass (SSB) and relative recruitment have been increasing significantly since 2013. The relative fishing mortality has been declining in recent years and relative F in 2019 is close to the lowest observed in the time-series. (Figure 1).</p>			

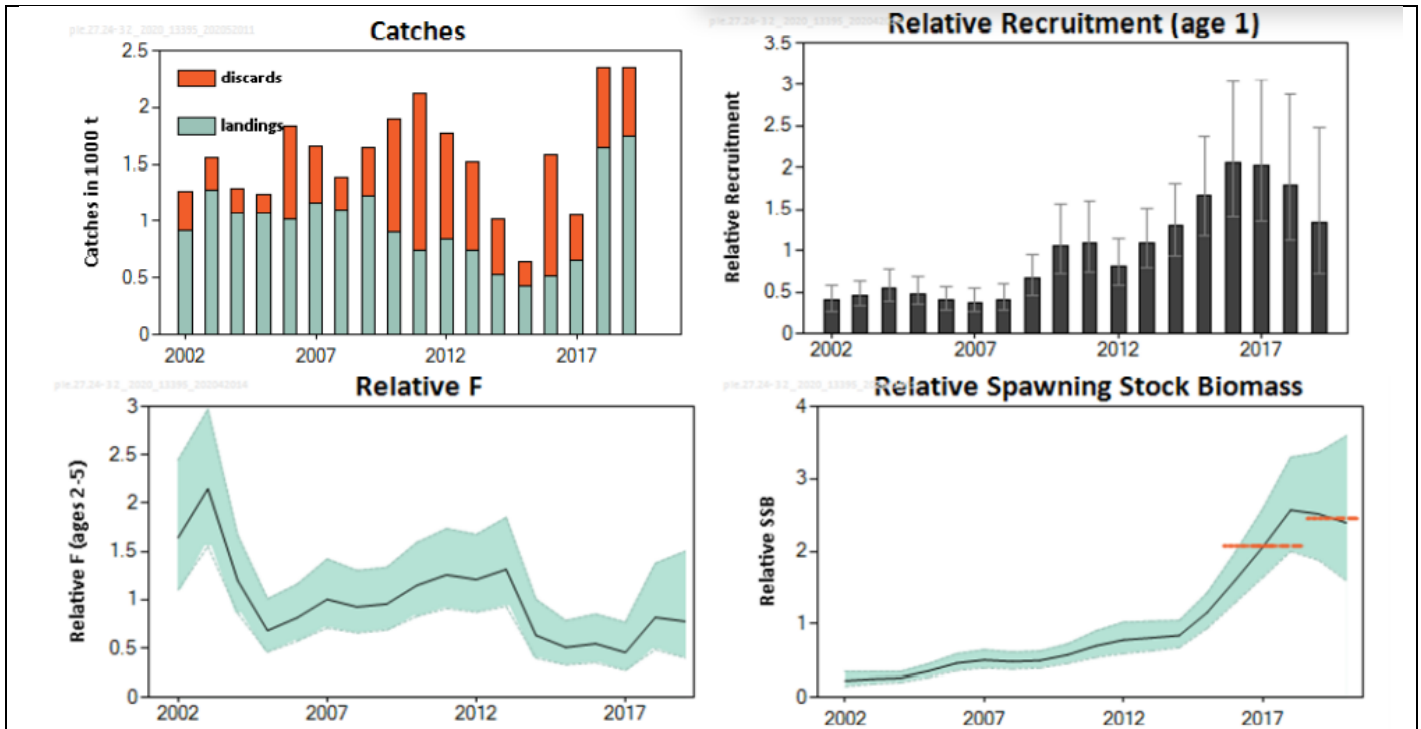


Figure 1. Plaice in subdivisions 24–32. Summary of stock assessment (catch weights in thousand tonnes). Recruitment, F, and SSB are relative to the mean of the time-series. The dashed lines in the SSB plot indicate the average values of the respective years. Relative recruitment, F, and SSB show confidence intervals (95%) in the plots. Source: ICES 2020

Consequently, the relative fishing mortality is below, and the relative stock size above, proxies of the MSY reference points; no additional precautionary buffer was, therefore, applied.

Therefore, the species is considered, in its most recent stock assessment, to have a biomass above the limit reference point and the species **PASSES** the clause C1.2.

References

ICES. 2019. Plaice (*Pleuronectes platessa*) in subdivisions 24-32 (Baltic Sea, excluding the Sound and Belt Seas). In Report of the ICES Advisory Committee, 2019, ple.27.24-32. <https://doi.org/10.17895/ices.advice.4752>

ICES. 2020. Plaice (*Pleuronectes platessa*) in subdivisions 24–32 (Baltic Sea, excluding the Sound and Belt Seas). In Report of the ICES Advisory Committee, 2020. ICES Advice 2020, ple.27.24-32. <https://doi.org/10.17895/ices.advice.5871>.

Links

MARINTRUST Standard clause	1.3.2.2
FAO CCRF	7.5.3
GSSI	D.3.04, D5.01