



## MarinTrust Standard V2

# By-product Fishery Assessment Report Template

**MarinTrust Programme**

Unit C, Printworks

22 Amelia Street

London

SE17 3BZ

E: [standards@marin-trust.com](mailto:standards@marin-trust.com)

T: +44 2039 780 819

**Table 1 Application details and summary of the assessment outcome**

Fishery Under Assessment	Species:	Plaice ( <i>Pleuronectes platessa</i> )
	Geographical area:	FAO Area 27 Atlantic Northeast
	Country of origin of the product:	Denmark
	Stock:	Subarea 4 (North Sea) and Subdivision 20 (Skagerrak)
Date	31/03/2021	
Report Code	BP36	
Assessor	Virginia Polonio	
Country of origin of the product - PASS	Denmark	
Country of origin of the product - FAIL	NA	

Application details and summary of the assessment outcome			
Name:			
Address:			
Country: Denmark		Zip:	
Tel. No.:		Fax. No.:	
Email address:		Applicant Code:	
Key Contact:		Title:	
Certification Body Details			
Name of Certification Body:		Global Trust Certification	
Assessor	Peer Reviewer	Assessment Days	Initial/Surveillance/ Re-approval
Virginia Polonio	Geraldine Criquet	0.5	Re-Approval
Assessment Period	March 2021		

Scope Details	
Main Species	Plaice ( <i>Pleuronectes platessa</i> )
Stock	Subarea 4 (North Sea) and Subdivision 20 (Skagerrak)
Fishery Location	FAO Area 27 Atlantic Northeast
Management Authority (Country/ State)	European Union/Common Fisheries Policy and Danish Directorate of Fisheries
Gear Type(s)	Beam trawls and otter trawls
Outcome of Assessment	
Peer Review Evaluation	Agree with assessor's determination
Recommendation	<b>APPROVED</b>

## Table 2. Assessment Determination

Assessment Determination
<p>If any species is categorised as Endangered or Critically Endangered on the IUCN Red List, or if it appears in the CITES appendices, it cannot be approved for use as Marin Trust raw material. Plaice does not appear as Endangered or Critically Endangered on the IUCN Red List, nor does it appear in the CITES appendices; therefore, plaice is eligible for approval for use as Marin Trust raw material.</p> <p>An EU multiannual management plan (MAP) has been agreed by the EU for this stock (EU, 2018). There is no agreement with Norway regarding this plan and it is not used as the basis of the advice for this shared stock. ICES was requested by the EC to provide advice based on the MSY approach, and to include the MAP as a catch option. There are reference points defined for this stock and therefore, the stock has been assessed under Category C.</p> <p>In the last stock assessment, removals are considered and the stock is above <math>B_{lim}</math> and <math>MSY_{trigger}</math>, therefore the fishery <b>PASSES</b> clauses C1.1 and C1.2.</p> <p>Plaice in Subarea 4 (North Sea) and Subdivision 20 (Skagerrak) is <b>APPROVED</b> by the assessor for the production of fishmeal and fish oil under the Marin Trust v 2.0 by-products standard.</p>
Fishery Assessment Peer Review Comments
<p>The assessor correctly classified North Sea and Skagerrak plaice stock as category C, this stock is managed and reference points are defined.</p> <p>Fishery removals are considered in the stock assessment process. The most recent stock assessment shows that the stock is well above <math>B_{lim}</math> and <math>MSY_{trigger}</math>. Therefore, the stock is considered to have a biomass above the limit reference point.</p> <p>The North Sea and Skagerrak plaice stock passes both Clauses C1.1 and C1.2 and is therefore approved under the Marin Trust v 2.0 by-products standard.</p>
Notes for On-site Auditor

## Species Categorisation

**NB:** If any species is categorised as Endangered or Critically Endangered on the IUCN Red List, or if it appears in CITES Appendix 1, it **cannot** be approved for use as an MARINTRUST raw material.

### IUCN Redlist Category

By-product material from a species listed by IUCN (the International Union for Conservation of Nature) under the Red List for the following categories shall immediately fail the assessment;

- EXTINCT (E) AND EXTINCT IN THE WILD (EW)
- CRITICALLY ENDANGERED (CR) facing an extremely high risk of extinction in the wild.
- ENDANGERED (EN) facing a very high risk of extinction in the wild.

By-product material may be used from the following categories provided that all clauses in the MarinTrust standard are passed.

- VULNERABLE (VU) facing a high risk of extinction in the wild.
- NEAR THREATENED (NT) does not qualify for above now, but is close or is likely to qualify for, a threatened category in the near future.
- LEAST CONCERN (LC) Widespread and abundant.
- DATA DEFICIENT (DD) and NOT EVALUATED (NE)

## Table 3 Species Categorisation Table

Common name	Latin name	Stock	Management	Category	IUCN Red List Category <sup>1</sup>	CITES Appendix 1 <sup>2</sup>
Plaice	<i>Pleuronectes platessa</i>	Subarea 4 (North Sea) and Subdivision 20 (Skagerrak)	EU (CFP) and Danish Directorate of Fisheries	C	LC	No

<sup>1</sup> <https://www.iucnredlist.org/>

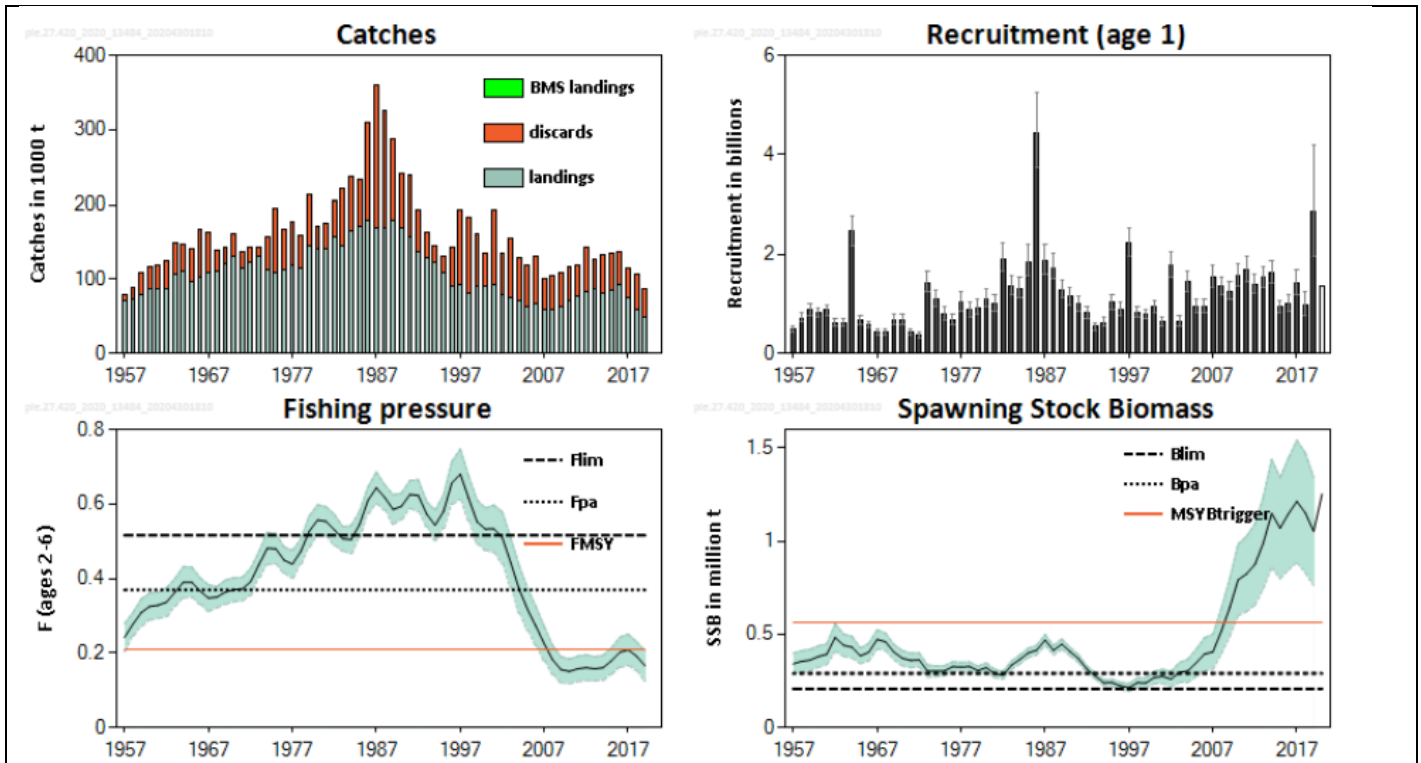
<sup>2</sup> <https://cites.org/eng/app/appendices.php>

## CATEGORY C SPECIES

In a whole fish assessment, Category C species are those which make up less than 5% of landings, but which are subject to a species-specific management regime. In most cases this will be because they are a commercial target in a fishery other than the one under assessment.

Clause C1 should be completed for **each** Category C species. If there are no Category C species in the fishery under assessment, this section can be deleted. Where a species fails this Clause, it may be assessed as a Category D species instead, EXCEPT if there is evidence that it is currently below the limit reference point.

Species Name		Plaice ( <i>Pleuronectes platessa</i> )	
C1	Category C Stock Status - Minimum Requirements		
	C1.1	Fishery removals of the species in the fishery under assessment are included in the stock assessment process, OR are considered by scientific authorities to be negligible.	PASS
	C1.2	The species is considered, in its most recent stock assessment, to have a biomass above the limit reference point (or proxy), OR removals by the fishery under assessment are considered by scientific authorities to be negligible.	PASS
			Clause outcome: PASS
<p><b>C1.1 Fishery removals of the species in the fishery under assessment are included in the stock assessment process, OR are considered by scientific authorities to be negligible.</b></p> <p>The data used in the stock assessment are: combined BTS (Tridens, Isis, Belgica, Solea, UK-BTS; 1996–2018), BTS-Isis (1985–1995), SNS (split into two series, SNS1 1970–1999 and SNS2 2000–2018), IBTS Q1 (2007–2018), and IBTS Q3 (1997–2018). Both the combined BTS Tridens and Isis and the IBTS (Q1 and Q3) survey indices are updated yearly using a delta-GAM model (Berg et al., 2014): Maturity-at-age is assumed constant; natural mortality-at-age is assumed constant at 0.1 year<sup>-1</sup> (ICES, 2017). Discards, BMS landings, and bycatch data from the majority of fleets were included in the assessment. In 2018, 75% of the total discards in Subarea 4 were obtained from sampling programmes. For Subdivision 20, 59% of the total discards were obtained from sampling programmes. BMS landings, where reported, are included with discards as unwanted catch in the assessment from 2016.</p> <p>Therefore, fishery removals of the species in the fishery under assessment are included in the stock assessment process and the species <b>PASSES</b> clause C1.1.</p> <p><b>C1.2 The species is considered, in its most recent stock assessment, to have a biomass above the limit reference point (or proxy), OR removals by the fishery under assessment are considered by scientific authorities to be negligible.</b></p> <p>ICES assessed that fishing pressure on the stock is below FMSY, Fpa, and Flim, and that spawning-stock size is above MSY Btrigger, Bpa, and Blim. (Figure 1).</p>			



**Figure 1.** Plaice in Subarea 4 and Subdivision 20. Summary of the stock assessment. Shaded areas (F, SSB) and error bars (R) indicate 95% confidence intervals. Assumed recruitment is unshaded. Landings below minimum conservation reference size (BMS) as officially reported. Source: ICES 2020

Therefore, the species is considered, in its most recent stock assessment, to have a biomass above the limit reference point and the species **PASSES** the clause C1.2.

**References**

ICES. 2020. Plaice (*Pleuronectes platessa*) in Subarea 4 (North Sea) and Subdivision 20 (Skagerrak). In Report of the ICES Advisory Committee, 2020. ICES Advice 2020, ple.27.420. <https://doi.org/10.17895/ices.advice.5910>.

ICES. 2019. Plaice (*Pleuronectes platessa*) in Subarea 4 (North Sea) and Subdivision 20 (Skagerrak). In Report of the ICES Advisory Committee, 2019. ICES Advice 2019, ple.27.420, <https://doi.org/10.17895/ices.advice.5644>

EU. 2018. Regulation (EU) 2018/973 of the European Parliament and of the Council of 4 July 2018 establishing a multiannual plan for demersal stocks in the North Sea and the fisheries exploiting those stocks, specifying details of the implementation of the landing obligation in the North Sea and repealing Council Regulations (EC) No 676/2007 and (EC) No 1342/2008. Official Journal of the European Union, L 179: 1–13. <http://data.europa.eu/eli/reg/2018/973/oj>

**Links**

MARINTRUST Standard clause	1.3.2.2
FAO CCRF	7.5.3
GSSI	D.3.04, D5.01