



## MarinTrust Standard V2

# By-product Fishery Assessment Report Template

**MarinTrust Programme**

Unit C, Printworks

22 Amelia Street

London

SE17 3BZ

E: [standards@marin-trust.com](mailto:standards@marin-trust.com)

T: +44 2039 780 819

**Table 1 Application details and summary of the assessment outcome**

Fishery Under Assessment	Species:	Whiting ( <i>Merlangius merlangus</i> )
	Geographical area:	FAO Area 27 North East Atlantic
	Country of origin of the product:	France
	Stock:	Whiting in ICES Subarea 4 and Division 7.d (North Sea and easter English Channel)
Date	16 November 2021	
Report Code	BP 237	
Assessor	Geraldine Criquet	
Country of origin of the product - PASS	France	
Country of origin of the product - FAIL	NA	

Application details and summary of the assessment outcome			
Name: Bioceval SAS			
Address:			
Country: France		Zip:	
Tel. No.:		Fax. No.:	
Email address:		Applicant Code:	
Key Contact:		Title:	
Certification Body Details			
Name of Certification Body:		Global Trust Certification	
Assessor	Peer Reviewer	Assessment Days	Initial/Surveillance/ Re-approval
Geraldine Criquet	Virginia Polonio	0.5	Re-approval
Assessment Period	To November 2021		

Scope Details	
Main Species	Whiting ( <i>Merlangius merlangus</i> )
Stock	Whiting in ICES Subarea 4 and Division 7.d (North Sea and easter English Channel)
Fishery Location	FAO Area 27 Northeast Atlantic Ocean
Management Authority (Country/ State)	European Union / France Direction des Pêches Maritimes et de l'Aquaculture
Gear Type(s)	Demersal trawl and seine and other gears
Peer Review Evaluation	Agrees with assessor's determination
Recommendation	<b>APPROVED</b>

## Table 2. Assessment Determination

Assessment Determination
<p>If any species is categorised as Endangered or Critically Endangered on IUCN's Red List, or if it appears in the CITES appendices, it cannot be approved for use as Marin Trust raw material. Whiting (<i>Merlangius merlangus</i>) is neither listed as Endangered or Critically Endangered on IUCN's Red List, nor listed in CITES appendices; therefore, whiting is eligible for approval for use as Marin Trust by-product raw material.</p> <p>The North Sea and easter English Channel whiting stock is managed through the EU Multiannual plan (MAP) for the North Sea adopted in 2018 and reference points are defined for the stock, therefore it was assessed under category C.</p> <p>Fishery removals are included in the stock assessment process, it <b>PASSES Clause C1.1</b>. The stock is considered, in its most recent stock assessment, to have a biomass above the limit reference point, it <b>PASSES Clause C1.2</b>.</p> <p>Therefore, whiting in ICES Subarea 4 and Division 7.d (North Sea and easter English Channel) is <b>APPROVED</b> for the production of fishmeal and fish oil under the current Marin Trust v 2.0 by-products.</p>
Fishery Assessment Peer Review Comments
<p>An EU multiannual management plan (MAP) has been agreed by the EU for this stock (EU, 2018). ICES was requested by EC and UK to provide advice based on the MSY approach and to include FMSY ranges in the catch scenarios, reference points are defined for this stock consequently, the stock has been correctly classified as category C.</p> <p>Removals are included in the stock assessment and the biomass is above MSY.</p> <p>Therefore, the peer review recommends the approval of the stock under the current Marin Trust v 2.0 by-products.</p>
Notes for On-site Auditor

## Species Categorisation

**NB:** If any species is categorised as Endangered or Critically Endangered on the IUCN Red List, or if it appears in CITES Appendix 1, it **cannot** be approved for use as an MARINTRUST raw material.

### IUCN Redlist Category

By-product material from a species listed by IUCN (the International Union for Conservation of Nature) under the Red List for the following categories shall immediately fail the assessment;

- EXTINCT (E) AND EXTINCT IN THE WILD (EW)
- CRITICALLY ENDANGERED (CR) facing an extremely high risk of extinction in the wild.
- ENDANGERED (EN) facing a very high risk of extinction in the wild.

By-product material may be used from the following categories provided that all clauses in the MarinTrust standard are passed.

- VULNERABLE (VU) facing a high risk of extinction in the wild.
- NEAR THREATENED (NT) does not qualify for above now, but is close or is likely to qualify for, a threatened category in the near future.
- LEAST CONCERN (LC) Widespread and abundant.
- DATA DEFICIENT (DD) and NOT EVALUATED (NE)

## Table 3 Species Categorisation Table

Common name	Latin name	Stock	Management	Category	IUCN Red List Category <sup>1</sup>	CITES Appendix 1 <sup>2</sup>
Whiting	<i>Merlangius merlangus</i>	Whiting in Subarea 4 and Division 7.d (North Sea and easter English Channel)	European Union / France Direction des Pêches Maritimes et de l'Aquaculture	C	LC	No

<sup>1</sup> <https://www.iucnredlist.org/>

<sup>2</sup> <https://cites.org/eng/app/appendices.php>

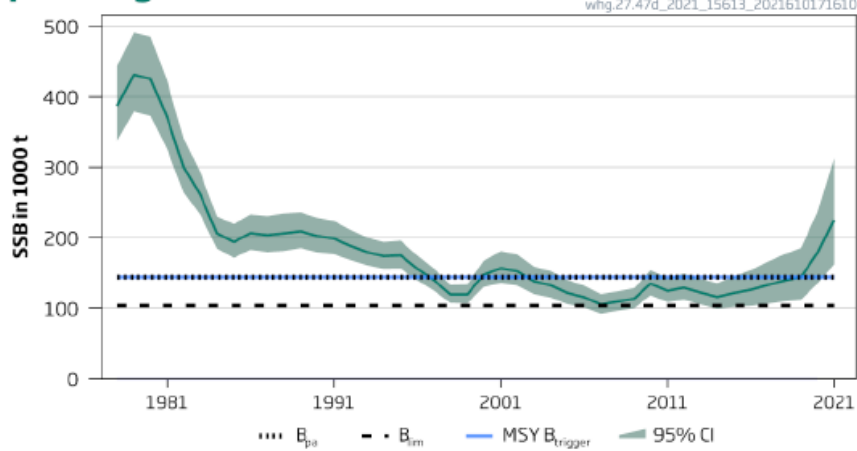
## CATEGORY C SPECIES

In a whole fish assessment, Category C species are those which make up less than 5% of landings, but which are subject to a species-specific management regime. In most cases this will be because they are a commercial target in a fishery other than the one under assessment.

Clause C1 should be completed for **each** Category C species. If there are no Category C species in the fishery under assessment, this section can be deleted. Where a species fails this Clause, it should be assessed as a Category D species instead.

Species Name		Whiting ( <i>Merlangius merlangus</i> )	
C1	Category C Stock Status - Minimum Requirements		
	C1.1	Fishery removals of the species in the fishery under assessment are included in the stock assessment process, OR are considered by scientific authorities to be negligible.	Yes
	C1.2	The species is considered, in its most recent stock assessment, to have a biomass above the limit reference point (or proxy), OR removals by the fishery under assessment are considered by scientific authorities to be negligible.	Yes
			Clause outcome: PASS
<p><b>C1.1 Fishery removals of the species in the fishery under assessment are included in the stock assessment process, OR are considered by scientific authorities to be negligible.</b></p> <p>The stock assessment type is an age-based analytical assessment and input data include commercial catches (international catches, ages from catch sampling by métier, since 1978). Catches are presented in Figure 1. Therefore, fishery removals of the stock, including from the fishery under assessment, are included in the stock assessment process, it <b>PASSES Clause C1.1</b></p>			
<p style="text-align: right; font-size: small;">whg.27.47d_2021_15613_2021610171610</p>			
<p><b>Figure 1.</b> Whiting in Subarea 4 and Division 7.d. Catches. ICES 2021</p>			
<p><b>C1.2 The species is considered, in its most recent stock assessment, to have a biomass above the limit reference point (or proxy), OR removals by the fishery under assessment are considered by scientific authorities to be negligible.</b></p> <p>The spawning-stock size is above MSY <math>B_{trigger}</math>, <math>B_{pa}</math> and <math>B_{lim}</math> (Figure 2). Therefore, the stock is considered, in its most recent stock assessment, to have a biomass above the limit reference point. Therefore, <b>C.1.2. is met.</b></p>			

## Spawning Stock Biomass



**Figure 2.** Whiting in Subarea 4 and Division 7.d. Summary of the stock assessment. Spawning stock biomass. ICES 2021

### References

ICES. 2021. Whiting (*Merlangius merlangus*) in Subarea 4 and Division 7.d (North Sea and eastern English Channel). In Report of the ICES Advisory Committee, 2021. ICES Advice 2021, whg.27.47d. <https://doi.org/10.17895/ices.advice.7885>. <https://www.ices.dk/sites/pub/Publication%20Reports/Advice/2021/2021/whg.27.47d.pdf>

Nedreaas, K., Florin, A., Cook, R., Fernandes, P. & Lorance, P. 2014. *Merlangius merlangus*. The IUCN Red List of Threatened Species 2014: e.T198585A45097610. <https://dx.doi.org/10.2305/IUCN.UK.2014-3.RLTS.T198585A45097610.en>. Downloaded on 16 November 2021.

### Links

MARINTRUST Standard clause	1.3.2.2
FAO CCRF	7.5.3
GSSI	D.3.04, D5.01