



MarinTrust Standard V2

By-product Fishery Assessment Report Template

MarinTrust Programme

Unit C, Printworks

22 Amelia Street

London

SE17 3BZ

E: standards@marin-trust.com

T: +44 2039 780 819

Table 1 Application details and summary of the assessment outcome

| | | |
|---|-----------------------------------|---|
| Fishery Under Assessment | Species: | Dover sole (<i>Solea solea</i>) |
| | Geographical area: | FAO Area 27 North East Atlantic |
| | Country of origin of the product: | France |
| | Stock: | Sole in Divisions 7.f and 7.g (Bristol Channel, Celtic Sea) |
| Date | 8 November 2021 | |
| Report Code | BP 233 | |
| Assessor | Geraldine Criquet | |
| Country of origin of the product - PASS | France | |
| Country of origin of the product - FAIL | NA | |

| Application details and summary of the assessment outcome | | | |
|---|------------------|----------------------------|-----------------------------------|
| Name: Bioceval SAS | | | |
| Address: | | | |
| Country: France | | Zip: | |
| Tel. No.: | | Fax. No.: | |
| Email address: | | Applicant Code: | |
| Key Contact: | | Title: | |
| Certification Body Details | | | |
| Name of Certification Body: | | Global Trust Certification | |
| Assessor | Peer Reviewer | Assessment Days | Initial/Surveillance/ Re-approval |
| Geraldine Criquet | Virginia Polonio | 0.5 | Surveillance 2 |
| Assessment Period | To November 2021 | | |

| Scope Details | |
|---------------------------------------|--|
| Main Species | Dover sole (<i>Solea solea</i>) |
| Stock | Sole in Divisions 7.f and 7.g (Bristol Channel, Celtic Sea) |
| Fishery Location | FAO Area 27 Northeast Atlantic Ocean |
| Management Authority (Country/ State) | European Union / France Direction des Pêches Maritimes et de l'Aquaculture |
| Gear Type(s) | Trawl |
| Peer Review Evaluation | Agree with assessor's determination |
| Recommendation | APPROVED |

Table 2. Assessment Determination

| Assessment Determination |
|---|
| <p>If any species is categorised as Endangered or Critically Endangered on IUCN’s Red List, or if it appears in the CITES appendices, it cannot be approved for use as Marin Trust raw material. Dover sole (<i>Solea solea</i>) is neither listed as Endangered or Critically Endangered on IUCN’s Red List, nor listed in CITES appendices; therefore, Dover sole is eligible for approval for use as Marin Trust by-product raw material.</p> <p>The Bristol Channel & Celtic Sea Dover sole stock is managed through the EU Multiannual plan (MAP) for the Western Waters adopted in 2019 and reference points are defined for the stock, therefore it was assessed under category C.</p> <p>Fishery removals are included in the stock assessment process, it PASSES Clause C1.1. The stock is considered, in its most recent stock assessment, to have a biomass above the limit reference point, it PASSES Clause C1.2.</p> <p>Therefore, Dover sole in ICES in Divisions 7.f and 7.g (Bristol Channel and Celtic Sea) is APPROVED for the production of fishmeal and fish oil under the current Marin Trust v 2.0 by-products.</p> |
| Fishery Assessment Peer Review Comments |
| <p>The stock has been identified correctly as there is species specific management plan for this stock.</p> <p>Fisheries removals are considered in the stock assessment and biomass is below limits. Therefore, the stock passes both clauses in category C and it is recommended for approval.</p> |
| Notes for On-site Auditor |
| |

Species Categorisation

NB: If any species is categorised as Endangered or Critically Endangered on the IUCN Red List, or if it appears in CITES Appendix 1, it **cannot** be approved for use as an MARINTRUST raw material.

IUCN Redlist Category

By-product material from a species listed by IUCN (the International Union for Conservation of Nature) under the Red List for the following categories shall immediately fail the assessment;

- EXTINCT (E) AND EXTINCT IN THE WILD (EW)
- CRITICALLY ENDANGERED (CR) facing an extremely high risk of extinction in the wild.
- ENDANGERED (EN) facing a very high risk of extinction in the wild.

By-product material may be used from the following categories provided that all clauses in the MarinTrust standard are passed.

- VULNERABLE (VU) facing a high risk of extinction in the wild.
- NEAR THREATENED (NT) does not qualify for above now, but is close or is likely to qualify for, a threatened category in the near future.
- LEAST CONCERN (LC) Widespread and abundant.
- DATA DEFICIENT (DD) and NOT EVALUATED (NE)

Table 3 Species Categorisation Table

| Common name | Latin name | Stock | Management | Category | IUCN Red List Category ¹ | CITES Appendix 1 ² |
|-------------|--------------------|---|--|----------|-------------------------------------|-------------------------------|
| Dover sole | <i>Solea solea</i> | Sole in ICES in Divisions 7.f and 7.g (Bristol Channel, Celtic Sea) | European Union / France Direction des Pêches Maritimes et de l'Aquaculture | C | LC | No |

¹ <https://www.iucnredlist.org/>

² <https://cites.org/eng/app/appendices.php>

CATEGORY C SPECIES

In a whole fish assessment, Category C species are those which make up less than 5% of landings, but which are subject to a species-specific management regime. In most cases this will be because they are a commercial target in a fishery other than the one under assessment.

Clause C1 should be completed for **each** Category C species. If there are no Category C species in the fishery under assessment, this section can be deleted. Where a species fails this Clause, it should be assessed as a Category D species instead.

| Species Name | | Dover sole (<i>Solea solea</i>) |
|---|--|--|
| C1 | Category C Stock Status - Minimum Requirements | |
| | C1.1 | Fishery removals of the species in the fishery under assessment are included in the stock assessment process, OR are considered by scientific authorities to be negligible. Yes |
| | C1.2 | The species is considered, in its most recent stock assessment, to have a biomass above the limit reference point (or proxy), OR removals by the fishery under assessment are considered by scientific authorities to be negligible. Yes |
| | | Clause outcome: PASS |
| <p>C1.1 Fishery removals of the species in the fishery under assessment are included in the stock assessment process, OR are considered by scientific authorities to be negligible.</p> <p>The stock assessment type is an age-based analytical assessment and input data include commercial landings-at-age data. Catches are presented in Figure 1.</p> <p>Therefore, fishery removals of the stock, including from the fishery under assessment, are included in the stock assessment process, it PASSES Clause C1.1</p> | | |
| <div style="text-align: center;"> <p>Figure 1. Sole in ICES in Divisions 7.f and 7.g. Long-term trends in catches (landings and discards). ICES 2021</p> </div> | | |
| <p>C1.2 The species is considered, in its most recent stock assessment, to have a biomass above the limit reference point (or proxy), OR removals by the fishery under assessment are considered by scientific authorities to be negligible.</p> <p>The spawning-stock size is above $MSY B_{trigger}$, B_{pa} and B_{lim} (Figure 2).</p> <p>Therefore, the stock is considered, in its most recent stock assessment, to have a biomass above the limit reference point, C1.2 is met.</p> | | |

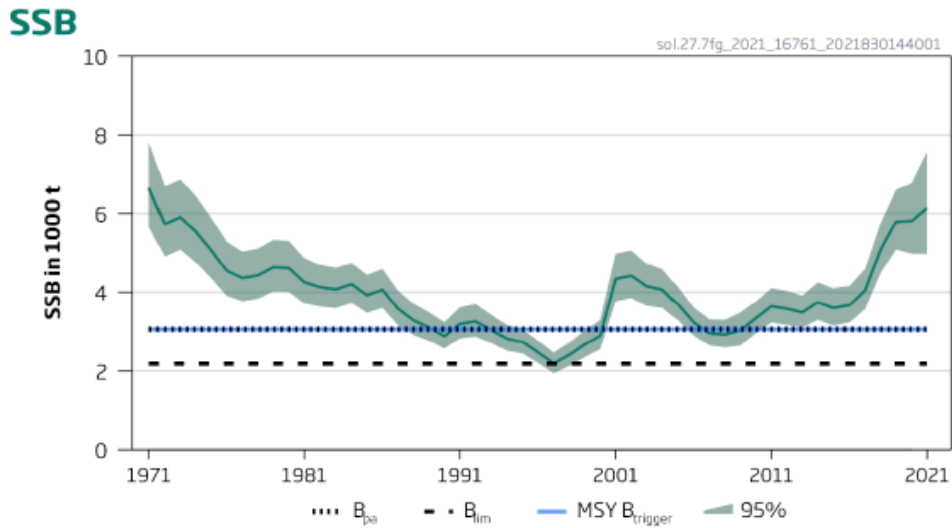


Figure 2. Sole in ICES in Divisions 7.f and 7.g. Summary of the stock assessment. Spawning stock biomass. ICES 2021

References

ICES. 2021. Sole (*Solea solea*) in divisions 7.f and 7.g (Bristol Channel, Celtic Sea). *In* Report of the ICES Advisory Committee, 2021. ICES Advice 2021, sol.27.7fg, <https://doi.org/10.17895/ices.advice.8477>.
<https://www.ices.dk/sites/pub/Publication%20Reports/Advice/2021/2021/sol.27.7fg.pdf>

Monroe, T., Keskin, Ç., Costa, M. & Rijnsdorp, A.D. 2015. *Solea solea* (errata version published in 2016). *The IUCN Red List of Threatened Species* 2015: e.T198739A87698320. Downloaded on 08 November 2021.

Links

| | |
|----------------------------|---------------|
| MARINTRUST Standard clause | 1.3.2.2 |
| FAO CCRF | 7.5.3 |
| GSSI | D.3.04, D5.01 |