



## MarinTrust Standard V2

# By-product Fishery Assessment Report Template

**MarinTrust Programme**

Unit C, Printworks

22 Amelia Street

London

SE17 3BZ

E: [standards@marin-trust.com](mailto:standards@marin-trust.com)

T: +44 2039 780 819

**Table 1 Application details and summary of the assessment outcome**

Fishery Under Assessment	Species:	Pacific Cod, <i>Gadus macrocephalus</i>
	Geographical area:	FAO Area 67 Pacific Northeast
	Flag Country:	USA
	Stock:	Gulf of Alaska Pacific cod
Date	26/08/2021	
Report Code	BP163	
Assessor	Virginia Polonio	
Applicant Country	Vietnam	
By-product – PASS /FAIL	PASS	

Application details and summary of the assessment outcome			
Name: Thien Quynh Co Ltd			
Address:			
Country: Vietnam		Zip:	
Tel. No.:		Fax. No.:	
Email address:		Applicant Code:	
Key Contact:		Title:	
Certification Body Details			
Name of Certification Body:		Global Trust Certification	
Assessor	Peer Reviewer	Assessment Days	Initial/Surveillance/ Re-approval
Virginia Polonio	Geraldine Criquet	0.5	Re-approval
Assessment Period	To August 2021		

Scope Details	
Main Species	Pacific cod, <i>Gadus macrocephalus</i>
Stock	Gulf of Alaska Pacific cod
Fishery Location	FAO Area 67 Pacific Northeast
Management Authority (Country/ State)	Alaska Department of Fish and Game (ADF&G), North Pacific Fishery Management Council (NPFMC)
Gear Type(s)	Bottom trawl, vertical lines and pots
Peer Review Evaluation	Agreed with the assessor's recommendation of approval
Recommendation	<b>APPROVED</b>

**Table 2. Assessment Determination**

Assessment Determination
<p>If a species is categorised as Endangered or Critically Endangered on IUCN’s Red List, or if it appears in the CITES appendices, it cannot be approved for use as MarinTrust raw material.</p> <p>Pacific cod, <i>Gadus macrocephalus</i> is listed on the IUCN Red List as globally Near Threatened (NT) and is not listed in CITES such that Pacific cod derived products are eligible for approval for use as MarinTrust by-product raw material.</p> <p>Management of the Pacific cod fishery is highly precautionary. Catch limits (TACs) are consistently set well below the advised upper limit on harvests (ABC) (Barbeaux et al. 2020). Reference points are defined for the stock, it was evaluated under category C.</p> <p>Fishery removals of the stock are considered in their respective stock assessment processes such that the fishery <b>PASSES</b> Clause C1.1.</p> <p>In the last stock assessment, the stock is not overfished, and overfishing is not subject to happen, such that the fishery <b>PASSES</b> Clause C1.2.</p> <p>As the stock passes both Clause C1.1 and C1.2, the Gulf of Alaska Pacific cod (<i>Gadus macrocephalus</i>) is <b>APPROVED</b> for the production of fishmeal and fish oil under the current MarinTrust v 2.0 by-product standard.</p>
Fishery Assessment Peer Review Comments
<p>The assessor correctly classified Gulf of Alaska Pacific cod as category C, reference points are defined to assess status of the stock relative to.</p> <p>Fishery removals are included in the stock assessment process so the stock PASSES Clause C1.1. The Gulf of Alaska Pacific cod stock is considered, in its most recent stock assessment, to have a biomass above the limit reference point. Therefore, it PASSES Clause C1.2.</p> <p>Therefore, the Gulf of Alaska Pacific cod is <b>APPROVED</b>.</p>
Notes for On-site Auditor

## Species Categorisation

**NB:** If any species is categorised as Endangered or Critically Endangered on the IUCN Red List, or if it appears in CITES Appendix 1, it **cannot** be approved for use as an MARINTRUST raw material.

### IUCN Redlist Category

By-product material from a species listed by IUCN (the International Union for Conservation of Nature) under the Red List for the following categories shall immediately fail the assessment;

- EXTINCT (E) AND EXTINCT IN THE WILD (EW)
- CRITICALLY ENDANGERED (CR) facing an extremely high risk of extinction in the wild.
- ENDANGERED (EN) facing a very high risk of extinction in the wild.

By-product material may be used from the following categories provided that all clauses in the MarinTrust standard are passed.

- VULNERABLE (VU) facing a high risk of extinction in the wild.
- NEAR THREATENED (NT) does not qualify for above now, but is close or is likely to qualify for, a threatened category in the near future.
- LEAST CONCERN (LC) Widespread and abundant.
- DATA DEFICIENT (DD) and NOT EVALUATED (NE)

## Table 3 Species Categorisation Table

Common name	Latin name	Stock	Management	Category	IUCN Red List Category <sup>1</sup>	CITES Appendix 1 <sup>2</sup>
Pacific cod	<i>Gadus macrocephalus</i>	FAO Area 67 Pacific Northeast – Gulf of Alaska	Alaska Department of Fish and Game (ADF&G), North Pacific Fishery Management Council (NPFMC)	C	LC	No

<sup>1</sup> <https://www.iucnredlist.org/>

<sup>2</sup> <https://cites.org/eng/app/appendices.php>

## CATEGORY C SPECIES

In a whole fish assessment, Category C species are those which make up less than 5% of landings, but which are subject to a species-specific management regime. In most cases this will be because they are a commercial target in a fishery other than the one under assessment.

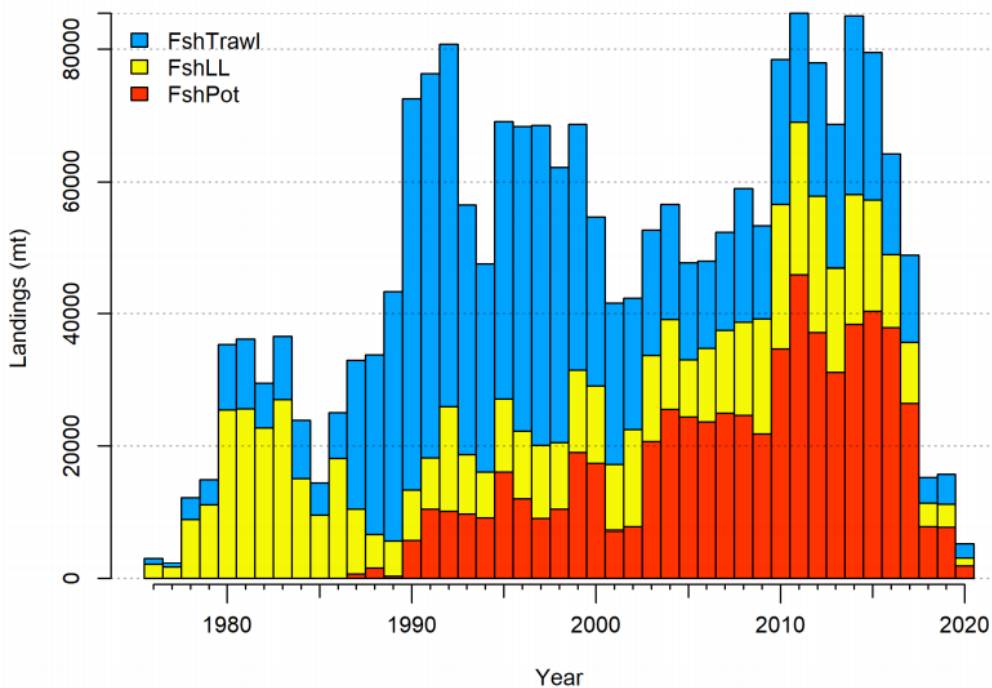
Clause C1 should be completed for **each** Category C species. If there are no Category C species in the fishery under assessment, this section can be deleted. Where a species fails this Clause, it should be assessed as a Category D species instead.

<b>Species Name</b>		Pacific cod, <i>Gadus macrocephalus</i>	
<b>C1</b>	<b>Category C Stock Status - Minimum Requirements</b>		
	<b>C1.1</b>	Fishery removals of the species in the fishery under assessment are included in the stock assessment process, OR are considered by scientific authorities to be negligible.	Yes
	<b>C1.2</b>	The species is considered, in its most recent stock assessment, to have a biomass above the limit reference point (or proxy), OR removals by the fishery under assessment are considered by scientific authorities to be negligible.	Yes
			<b>Clause outcome:</b> PASS

**C1.1 Fishery removals of the species in the fishery under assessment are included in the stock assessment process, OR are considered by scientific authorities to be negligible.**

In the last stock assessment, the inputs data are as follows: Federal and state catch data for 2019 were updated and preliminary federal and state catch data for 2020 were included. Commercial federal and state fishery size composition data for 2019 were updated, and preliminary commercial federal and state fishery size composition data for 2020 were included; AFSC bottom trawl survey Pacific cod conditional length-at-age data for the GOA for 2019 were included; AFSC longline survey Pacific cod abundance index and length composition data for the GOA for 2020 were also included (Figure 1)

All length composition samples with less than 30 fish for a particular area, year, quarter, and gear type were excluded from the dataset. This made up 2% of the data representing < 1% of the overall catch.



**Figure 1.** Gulf of Alaska Pacific cod catch from 1977-2020. Note that 2020 catch was through October 2.

Therefore, fishery removals of the species in the fishery under assessment are included in the stock assessment process and the clause **C1.1 is met.**

**C1.2 The species is considered, in its most recent stock assessment, to have a biomass above the limit reference point (or proxy), OR removals by the fishery under assessment are considered by scientific authorities to be negligible.**

In accordance with the precautionary management, when biomass levels dropped below B20% in 2018 due to a marine warming event (National Marine Fisheries Service 2021), the ABC and Total TAC were reduced by 80% starting in 2018, resulting in substantially lower fishing mortality. In 2020 the federal fishery was closed and the state fishery catch reduced (Barbeaux et al. 2020; Alaska Fisheries Development Foundation 2021).

The last stock assessment has shown that the data as interpreted through Model 19.1 indicates that the stock remains at low levels, but is increasing with a better 2018 recruitment and reduction in fishing mortality. Model 19.1 indicates the stock was likely below B20% from 2018 through 2020, but will be above B20% in 2021. For 2021 the stock is estimated to be at B22.2%, above the overfished determination level. The beginning of the year 2020 spawning biomass level was the lowest of the time series. A stronger 2018-year class and lower fishing mortality is projected to increase the spawning stock biomass above B20% at the start of 2021 and continue to increase to the beginning of 2022 to B28.2%. Although 2018 was stronger than the 2014-2017-year classes, the cohort is still well below average, the apparent recent increase in biomass is likely due to substantially lower fishing mortality since 2018 (Table 1).

**Table 1.** Key results and reference points for Pacific cod in Gulf of Alaska. Source: Barbeaux et al. 2020

Quantity	As estimated or specified last year for:		As estimated or specified this year for:	
	2020	2021	2021	2022
<i>M</i> (natural mortality rate)	0.49	0.49	0.47	0.47
Tier	3b	3b	3b	3b
Projected total (age 0+) biomass (t)	203,373	261,484	265,661	312,783
Female spawning biomass (t)				
Projected	32,958	42,026	39,977	50,813
<i>B</i> <sub>100%</sub>	187,780	187,780	180,111	180,111
<i>B</i> <sub>40%</sub>	75,112	75,112	72,045	72,045
<i>B</i> <sub>35%</sub>	65,723	65,723	63,039	63,039
<i>F</i> <sub>OFL</sub>	0.27	0.36	0.41	0.54
<i>maxF</i> <sub>ABC</sub>	0.22	0.29	0.33	0.43
<i>F</i> <sub>ABC</sub>	0.22	0.29	0.33	0.43
OFL (t)	17,794	30,099	28,977	46,587
maxABC (t)	14,621	24,820	23,627	38,141
ABC (t)	*14,621	*24,820	23,627	38,141
<b>Status</b>	<b>2018</b>	<b>2019</b>	<b>2019</b>	<b>2020</b>
Overfishing	No	n/a	No	n/a
Overfished	n/a	No	n/a	No
Approaching overfished	n/a	No	n/a	No

\* Assumed 15,000 t catch in 2019 and no directed fishery in 2020 as reference level is below *B*<sub>20%</sub>. For 2021 projections the 2020 catch was assumed to be 3,300 t from state fisheries and 3,000 t from non-directed fishery bycatch.

The stock assessment model predicts an increase in biomass above B20% in 2021 (Barbeaux et al. 2020). Therefore, the species is considered, in its most recent stock assessment, to have a biomass above the limit reference point or proxy and the clause **C1.2 is met.**

--

**References**

Barbeaux, S., B. Ferriss, W. Palsson, K. Shotwell, I. Spies, M. Wang, and S. Zador. 2020. Assessment of the Pacific cod stock in the Gulf of Alaska. 181 pp.

Alaska Fisheries Development Foundation. 2021, January 25. Press release - GOA cod MSC certification is reinstated.

<b>Links</b>	
<b>MARINTRUST Standard clause</b>	1.3.2.2
<b>FAO CCRF</b>	7.5.3
<b>GSSI</b>	D.3.04, D5.01