



MarinTrust Standard V2

By-product Fishery Assessment Report Template

MarinTrust Programme

Unit C, Printworks

22 Amelia Street

London

SE17 3BZ

E: standards@marin-trust.com

T: +44 2039 780 819

Table 1 Application details and summary of the assessment outcome

Fishery Under Assessment	Species:	Turbot (<i>Scophthalmus maximus</i>)
	Geographical area:	FAO Area 27 North East Atlantic
	Country of origin of the product:	France
	Stock:	Turbot in ICES Subarea 4 (North Sea)
Date	16 July 2021	
Report Code	BP 147	
Assessor	Geraldine Criquet	
Country of origin of the product - PASS	FRANCE	
Country of origin of the product - FAIL	NA	

Application details and summary of the assessment outcome			
Name: Bioceval			
Address:			
Country: France		Zip:	
Tel. No.:		Fax. No.:	
Email address:		Applicant Code:	
Key Contact:		Title:	
Certification Body Details			
Name of Certification Body:		Global Trust Certification	
Assessor	Peer Reviewer	Assessment Days	Initial/Surveillance/ Re-approval
Geraldine Criquet	Sam Dignan	0.5	Surveillance 2
Assessment Period	To July 2021		

Scope Details	
Main Species	Turbot (<i>Scophthalmus maximus</i>)
Stock	Turbot in ICES Subarea 4 (North Sea)
Fishery Location	FAO Area 27 Northeast Atlantic Ocean
Management Authority (Country/ State)	EU/Common Fisheries Policy and France Direction des Pêches Maritimes et de l'Aquaculture (DPMA)
Gear Type(s)	Demersal trawls, seines, gillnets, beam trawls
Peer Review Evaluation	Agree with the assessor's recommendation of approval
Recommendation	APPROVED

Table 2. Assessment Determination

Assessment Determination
<p>If any species is categorised as Endangered or Critically Endangered on IUCN’s Red List, or if it appears in the CITES appendices, it cannot be approved for use as Marin Trust raw material. Turbot (<i>Scophthalmus maximus</i>) is neither listed as Endangered or Critically Endangered on IUCN’s Red List, nor listed in CITES appendices; therefore, North Sea turbot is eligible for approval for use as Marin Trust by-product raw material.</p> <p>The EU multiannual management plan (MAP) for the North Sea applies for this turbot stock. Reference points are defined for the stock, therefore it was assessed under category C.</p> <p>Fishery removals are included in the stock assessment process and it PASSES Clause C1.1. The stock is considered, in its most recent stock assessment, to have a biomass above the limit reference point, it PASSES Clause C1.2.</p> <p>Therefore, turbot in ICES Subarea 4 (North Sea) is APPROVED for the production of fishmeal and fish oil under the current Marin Trust v 2.0 by-products.</p>
Fishery Assessment Peer Review Comments
<p>The reviewer agrees with the recommendation.</p>
Notes for On-site Auditor

Species Categorisation

NB: If any species is categorised as Endangered or Critically Endangered on the IUCN Red List, or if it appears in CITES Appendix 1, it **cannot** be approved for use as an MARINTRUST raw material.

IUCN Redlist Category

By-product material from a species listed by IUCN (the International Union for Conservation of Nature) under the Red List for the following categories shall immediately fail the assessment;

- EXTINCT (E) AND EXTINCT IN THE WILD (EW)
- CRITICALLY ENDANGERED (CR) facing an extremely high risk of extinction in the wild.
- ENDANGERED (EN) facing a very high risk of extinction in the wild.

By-product material may be used from the following categories provided that all clauses in the MarinTrust standard are passed.

- VULNERABLE (VU) facing a high risk of extinction in the wild.
- NEAR THREATENED (NT) does not qualify for above now, but is close or is likely to qualify for, a threatened category in the near future.
- LEAST CONCERN (LC) Widespread and abundant.
- DATA DEFICIENT (DD) and NOT EVALUATED (NE)

Table 3 Species Categorisation Table

Common name	Latin name	Stock	Management	Category	IUCN Red List Category ¹	CITES Appendix 1 ²
Turbot	<i>Scophthalmus maximus</i>	Turbot in ICES Subarea 4 (North Sea)	EU/Common Fisheries Policy and France Direction des Pêches Maritimes et de l'Aquaculture (DPMA)	C	VU	No

¹ <https://www.iucnredlist.org/>

² <https://cites.org/eng/app/appendices.php>

CATEGORY C SPECIES

In a whole fish assessment, Category C species are those which make up less than 5% of landings, but which are subject to a species-specific management regime. In most cases this will be because they are a commercial target in a fishery other than the one under assessment.

Clause C1 should be completed for **each** Category C species. If there are no Category C species in the fishery under assessment, this section can be deleted. Where a species fails this Clause, it should be assessed as a Category D species instead.

Species Name		Turbot (<i>Scophthalmus maximus</i>)	
C1	Category C Stock Status - Minimum Requirements		
	C1.1	Fishery removals of the species in the fishery under assessment are included in the stock assessment process, OR are considered by scientific authorities to be negligible.	Yes
	C1.2	The species is considered, in its most recent stock assessment, to have a biomass above the limit reference point (or proxy), OR removals by the fishery under assessment are considered by scientific authorities to be negligible.	Yes
			Clause outcome: PASS
<p>C1.1 Fishery removals of the species in the fishery under assessment are included in the stock assessment process, OR are considered by scientific authorities to be negligible.</p> <p>The stock assessment is an age-based analytical assessment that uses landings (commercial landings) in the model and the forecast. Discards data are not included in the assessment, but are used to provide catch advice. Catches are presented in Figure 1.</p> <p>Therefore, fishery removals of the stock, including from the fishery under assessment, are included in the stock assessment process, it PASSES Clause C1.1.</p>			
<p style="text-align: center;">Catches</p> <p style="text-align: right; font-size: small;">tur.27.4_2021_14296_2021427103220</p>			
<p>Figure 1. Turbot in Subarea 4. Summary of the stock assessment. Discards are only available from 2013.</p>			
<p>C1.2 The species is considered, in its most recent stock assessment, to have a biomass above the limit reference point (or proxy), OR removals by the fishery under assessment are considered by scientific authorities to be negligible.</p> <p>The spawning-stock biomass (SSB) is above B_{lim}, B_{pa} and $MSY B_{trigger}$ (Figure 2). Therefore, the stock is considered to have a biomass above the limit reference point, and it PASSES Clause C1.2.</p>			

Spawning Stock Biomass

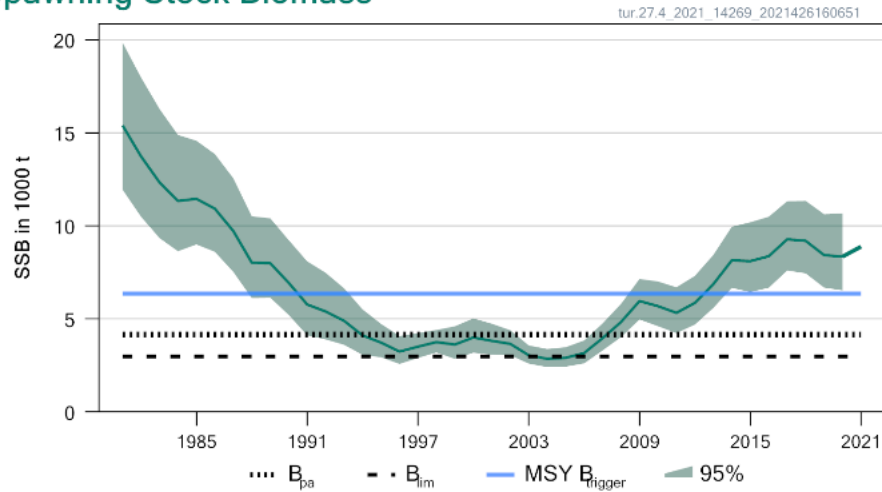


Figure 2. Turbot in Subarea 4. Summary of the stock assessment.

References

Munroe, T., Costa, M., Nielsen, J., Herrera, J., de Sola, L., Rijnsdorp, A.D. & Keskin, Ç. 2015. *Scophthalmus maximus*. *The IUCN Red List of Threatened Species* 2015: e.T198731A45790581. Downloaded on 16 July 2021.

<https://www.iucnredlist.org/species/198731/45790581>

ICES. 2021. Turbot (*Scophthalmus maximus*) in Subarea 4 (North Sea). In Report of the ICES Advisory Committee, 2021. ICES Advice 2021, tur.27.4. <https://doi.org/10.17895/ices.advice.7879>.

<https://www.ices.dk/sites/pub/Publication%20Reports/Advice/2021/2021/tur.27.4.pdf>

Links

MARINTRUST Standard clause	1.3.2.2
FAO CCRF	7.5.3
GSSI	D.3.04, D5.01