



MarinTrust Standard V2

By-product Fishery Assessment Report Template

MarinTrust Programme

Unit C, Printworks

22 Amelia Street

London

SE17 3BZ

E: standards@marin-trust.com

T: +44 2039 780 819

Table 1 Application details and summary of the assessment outcome

| | | |
|---|-----------------------------------|--|
| Fishery Under Assessment | Species: | Ling (<i>Molva molva</i>) |
| | Geographical area: | FAO Area 27 North East Atlantic |
| | Country of origin of the product: | France |
| | Stock: | Ling in ICES Division 5.b (Faroes grounds) |
| Date | 1 October 2021 | |
| Report Code | BP 138 | |
| Assessor | Geraldine Criquet | |
| Country of origin of the product - PASS | France | |
| Country of origin of the product - FAIL | NA | |

| Application details and summary of the assessment outcome | | | |
|---|------------------|----------------------------|-----------------------------------|
| Name: Bioceval / Copalis | | | |
| Address: | | | |
| Country: France | | Zip: | |
| Tel. No.: | | Fax. No.: | |
| Email address: | | Applicant Code: | |
| Key Contact: | | Title: | |
| Certification Body Details | | | |
| Name of Certification Body: | | Global Trust Certification | |
| Assessor | Peer Reviewer | Assessment Days | Initial/Surveillance/ Re-approval |
| Geraldine Criquet | Virginia Polonio | 0.5 | Initial |
| Assessment Period | To October 2021 | | |

| Scope Details | |
|---------------------------------------|--|
| Main Species | Ling (<i>Molva molva</i>) |
| Stock | Ling in ICES Division 5.b (Faroes grounds) |
| Fishery Location | FAO Area 27 Northeast Atlantic Ocean |
| Management Authority (Country/ State) | European Union / Fisheries authorities of Faroe Islands / France Direction des Pêches Maritimes et de l'Aquaculture |
| Gear Type(s) | Trawl, longline |
| Peer Review Evaluation | Agree with assessor's determination |
| Recommendation | APPROVED |

Table 2. Assessment Determination

| Assessment Determination |
|--|
| <p>If any species is categorised as Endangered or Critically Endangered on IUCN’s Red List, or if it appears in the CITES appendices, it cannot be approved for use as Marin Trust raw material. Ling (<i>Molva molva</i>) is neither listed as Endangered or Critically Endangered on IUCN’s Red List, nor listed in CITES appendices; therefore, ling is eligible for approval for use as Marin Trust by-product raw material.</p> <p>Ling in ICES Division 5.b is TAC-managed. Reference points are defined for the stock, therefore it was assessed under category C.</p> <p>Fishery removals are included in the stock assessment process and it PASSES Clause C1.1. The stock is considered, in its most recent stock assessment, to have a biomass above the limit reference point, it PASSES Clause C1.2.</p> <p>Therefore, ling in ICES Division 5.b (Faroes grounds) is APPROVED for the production of fishmeal and fish oil under the current Marin Trust v 2.0 by-products.</p> |
| Fishery Assessment Peer Review Comments |
| <p>The peer review agrees with the classification of the stock as C. The removals are considered in the stock assessment and the SSB is above limits. Therefore, ling in ICES Division 5.b (Faroes grounds) is APPROVED for the production of fishmeal and fish oil under the current Marin Trust v 2.0 by-products.</p> |
| Notes for On-site Auditor |
| |

Species Categorisation

NB: If any species is categorised as Endangered or Critically Endangered on the IUCN Red List, or if it appears in CITES Appendix 1, it **cannot** be approved for use as an MARINTRUST raw material.

IUCN Redlist Category

By-product material from a species listed by IUCN (the International Union for Conservation of Nature) under the Red List for the following categories shall immediately fail the assessment;

- EXTINCT (E) AND EXTINCT IN THE WILD (EW)
- CRITICALLY ENDANGERED (CR) facing an extremely high risk of extinction in the wild.
- ENDANGERED (EN) facing a very high risk of extinction in the wild.

By-product material may be used from the following categories provided that all clauses in the MarinTrust standard are passed.

- VULNERABLE (VU) facing a high risk of extinction in the wild.
- NEAR THREATENED (NT) does not qualify for above now, but is close or is likely to qualify for, a threatened category in the near future.
- LEAST CONCERN (LC) Widespread and abundant.
- DATA DEFICIENT (DD) and NOT EVALUATED (NE)

Table 3 Species Categorisation Table

| Common name | Latin name | Stock | Management | Category | IUCN Red List Category ¹ | CITES Appendix 1 ² |
|-------------|--------------------|--|--|----------|-------------------------------------|-------------------------------|
| Ling | <i>Molva molva</i> | Ling in ICES Division 5.b (Faroes grounds) | European Union / Fisheries authorities of Faroe Islands / France Direction des Pêches Maritimes et de l'Aquaculture | C | LC | No |

¹ <https://www.iucnredlist.org/>

² <https://cites.org/eng/app/appendices.php>

CATEGORY C SPECIES

In a whole fish assessment, Category C species are those which make up less than 5% of landings, but which are subject to a species-specific management regime. In most cases this will be because they are a commercial target in a fishery other than the one under assessment.

Clause C1 should be completed for **each** Category C species. If there are no Category C species in the fishery under assessment, this section can be deleted. Where a species fails this Clause, it should be assessed as a Category D species instead.

| Species Name | | Ling (<i>Molva molva</i>) in Division 5.b (Faroes grounds) | |
|---|--|--|-----------------------------|
| C1 | Category C Stock Status - Minimum Requirements | | |
| | C1.1 | Fishery removals of the species in the fishery under assessment are included in the stock assessment process, OR are considered by scientific authorities to be negligible. | Yes |
| | C1.2 | The species is considered, in its most recent stock assessment, to have a biomass above the limit reference point (or proxy), OR removals by the fishery under assessment are considered by scientific authorities to be negligible. | Yes |
| | | | Clause outcome: PASS |
| <p>C1.1 Fishery removals of the species in the fishery under assessment are included in the stock assessment process, OR are considered by scientific authorities to be negligible.</p> <p>The stock assessment is an age-based analytical assessment that uses catches in the model and in the forecast. Catches are presented in Figure 1. Catch data used are commercial catches, mainly Faroese catches, ages and length frequencies from catch sampling.</p> <p>Therefore, fishery removals of the stock, including from the fishery under assessment, are included in the stock assessment process, it PASSES Clause C1.1</p> | | | |
| <div style="text-align: center;"> <p>lin.27.5b_2021_14203_2021519163541</p> </div> | | | |
| <p>Figure 1. Ling in Division 5.b. Long-term trends in catches. Source: ICES 2021</p> | | | |
| <p>C1.2 The species is considered, in its most recent stock assessment, to have a biomass above the limit reference point (or proxy), OR removals by the fishery under assessment are considered by scientific authorities to be negligible.</p> <p>The spawning-stock size is above MSY $B_{trigger}$, B_{pa} and B_{lim} (Figure 2). Therefore, the stock is considered, in its most recent stock assessment, to have a biomass above the limit reference point, C1.2 is met.</p> | | | |

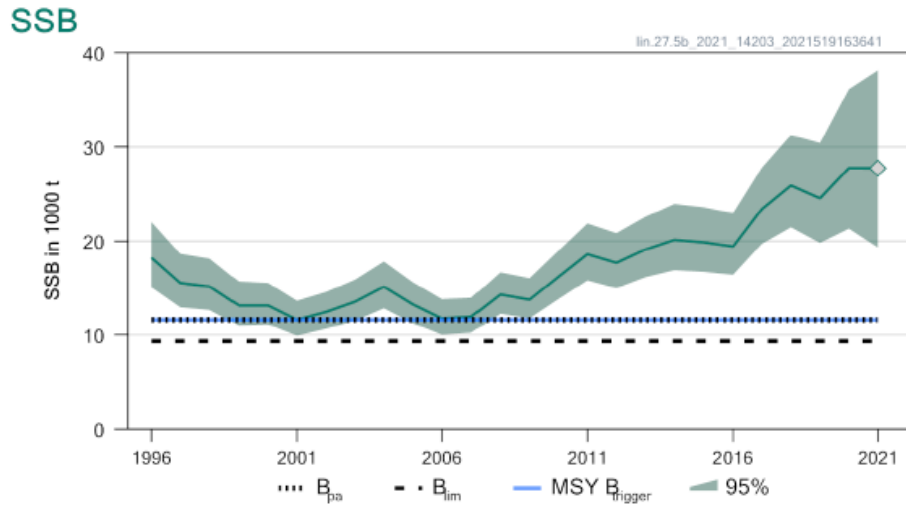


Figure 2. Ling in Division 5.b. Summary of the stock assessment. Spawning stock biomass. SSB value for 2021 (diamond) is predicted. Source: ICES 2021

References

ICES. 2021. Ling (*Molva molva*) in Division 5.b (Faroes grounds). In Report of the ICES Advisory Committee, 2021. ICES Advice 2021, lin.27.5b. <https://doi.org/10.17895/ices.advice.7788>.
<https://www.ices.dk/sites/pub/Publication%20Reports/Advice/2021/2021/lin.27.5b.pdf>

Fernandes, P., Cook, R., Florin, A., Lorange, P., Nielsen, J. & Nedreaas, K. 2015. *Molva molva*. The IUCN Red List of Threatened Species 2015: e.T198593A45132914. Downloaded on 09 July 2021.

Links

| | |
|-----------------------------------|---------------|
| MARINTRUST Standard clause | 1.3.2.2 |
| FAO CCRF | 7.5.3 |
| GSSI | D.3.04, D5.01 |