



MarinTrust Standard V2

By-product Fishery Assessment *Report Template (Turbot, Scophthalmus maximus in ICES Subarea 4)*

MarinTrust Programme

Unit C, Printworks

22 Amelia Street

London

SE17 3BZ

E: standards@marin-trust.com

T: +44 2039 780 819

Table 1 Application details and summary of the assessment outcome

| | | |
|---|-----------------------------------|--|
| Fishery Under Assessment | Species: | Turbot (<i>Scophthalmus maximus</i>) |
| | Geographical area: | FAO Area 27 North East Atlantic |
| | Country of origin of the product: | U.K. & Ireland |
| | Stock: | Turbot in ICES Subarea 4 (North Sea) |
| Date | 8 February 2022 | |
| Report Code | BP023 | |
| Assessor | Geraldine Criquet | |
| Country of origin of the product - PASS | U.K. & Ireland | |
| Country of origin of the product - FAIL | NA | |

| Application details and summary of the assessment outcome | | | |
|---|---------------|----------------------------|--------------------------------------|
| Company Name(s): | | | |
| Country: U.K. & Ireland | | | |
| Email address: | | Applicant Code: | |
| Certification Body Details | | | |
| Name of Certification Body: | | Global Trust Certification | |
| Assessor | Peer Reviewer | Assessment Days | Initial/Surveillance/ Re-approval |
| Geraldine Criquet | Ivan Mateo | 0.5 | Surveillance 1 |
| Assessment Period | February 2022 | | |

| Scope Details | |
|---------------------------------------|--|
| Main Species | Turbot (<i>Scophthalmus maximus</i>) |
| Stock | Turbot in ICES Subarea 4 (North Sea) |
| Fishery Location | FAO Area 27 Northeast Atlantic Ocean |
| Management Authority (Country/ State) | European Union / U.K. & Ireland management authorities |
| Gear Type(s) | Beam trawls, bottom trawls, and others |
| Outcome of Assessment | |
| Peer Review Evaluation | Agree with the assessor's recommendation |
| Recommendation | APPROVED |

Table 2. Assessment Determination

| Assessment Determination |
|--|
| <p>If any species is categorised as Endangered or Critically Endangered on IUCN's Red List, or if it appears in the CITES appendices, it cannot be approved for use as Marin Trust raw material. Turbot (<i>Scophthalmus maximus</i>) is neither listed as Endangered or Critically Endangered on IUCN's Red List, nor listed in CITES appendices; therefore, turbot is eligible for approval for use as Marin Trust by-product raw material.</p> <p>The EU Multiannual plan for the North Sea takes into account bycatch of this stock. Reference points are defined for the stock, therefore it was assessed under category C.</p> <p>Fishery removals are included in the stock assessment process, it PASSES Clause C1.1. The stock is considered, in its most recent stock assessment, to have a biomass above the limit reference point, it PASSES Clause C1.2.</p> <p>Therefore, turbot in ICES Subarea 4 (North Sea) is APPROVED for the production of fishmeal and fish oil under the current Marin Trust v 2.0 by-products.</p> |
| Fishery Assessment Peer Review Comments |
| <p>The assessor correctly classified the turbot in ICES Subarea 4 (North Sea) as category C, the stock is managed and reference points are defined to assess the stock status against.</p> <p>Fishery removals from the stock are considered in the stock assessment process. The most recent stock assessment shows that the stock is considered to have a biomass well above the limit reference point.</p> <p>Therefore, the turbot in ICES Subarea 4 (North Sea) fishery passes both C1.1 and C1.2 and therefore the turbot in ICES Subarea 4 (North Sea) is approved.</p> |
| Notes for On-site Auditor |
| NA |

Species Categorisation

NB: If any species is categorised as Endangered or Critically Endangered on the IUCN Red List, or if it appears in CITES Appendix 1, it **cannot** be approved for use as a MarinTrust raw material.

IUCN Red list Category

By-product material from a species listed by IUCN (the International Union for Conservation of Nature) under the Red List for the following categories shall immediately fail the assessment;

- EXTINCT (E) AND EXTINCT IN THE WILD (EW)
- CRITICALLY ENDANGERED (CR) facing an extremely high risk of extinction in the wild.
- ENDANGERED (EN) facing a very high risk of extinction in the wild.

By-product material may be used from the following categories provided that all clauses in the MarinTrust standard are passed.

- VULNERABLE (VU) facing a high risk of extinction in the wild.
- NEAR THREATENED (NT) does not qualify for above now, but is close or is likely to qualify for, a threatened category in the near future.
- LEAST CONCERN (LC) Widespread and abundant.
- DATA DEFICIENT (DD) and NOT EVALUATED (NE)

Table 3 Species Categorisation Table

| Common name | Latin name | Stock | Management | Category | IUCN Red List Category ¹ | CITES Appendix 1 ² |
|-------------|-----------------------------|--------------------------------------|--|----------|-------------------------------------|-------------------------------|
| Turbot | <i>Scophthalmus maximus</i> | Turbot in ICES Subarea 4 (North Sea) | European Union / U.K. & Ireland management authorities | C | VU | No |

¹ <https://www.iucnredlist.org/>

² <https://cites.org/eng/app/appendices.php>

CATEGORY C SPECIES

In a by-product assessment, Category C species are those which are subject to a species-specific management regime and are usually targeted species in fisheries for human consumption.

Clause C1 should be completed for each Category C species. If there are no Category C species in the fishery under assessment, this section can be deleted. Where a species fails this Clause, it should be assessed as a Category D species instead.

| Species Name | | Turbot (<i>Scophthalmus maximus</i>) | |
|--|---|--|-----------------------------|
| C1 | Category C Stock Status - Minimum Requirements | | |
| | C1.1 | Fishery removals of the species in the fishery under assessment are included in the stock assessment process, OR are considered by scientific authorities to be negligible. | Yes |
| | C1.2 | The species is considered, in its most recent stock assessment, to have a biomass above the limit reference point (or proxy), OR removals by the fishery under assessment are considered by scientific authorities to be negligible. | Yes |
| | | | Clause outcome: PASS |
| C1.1 Fishery removals of the species in the fishery under assessment are included in the stock assessment process, OR are considered by scientific authorities to be negligible. | | | |
| <p>The stock assessment type is an age-based analytical model (SAM) that uses landings (commercial landings raised to international landings) in the model and the forecast. Catches are presented in Figure 1.</p> <p>Therefore, fishery removals of the stock, including from the fishery under assessment, are included in the stock assessment process, it PASSES Clause C1.1</p> | | | |
| <div style="text-align: center;"> <h3>Catches</h3> <p style="text-align: right; font-size: small;">tur.27.4_2021_14296_2021427103220</p> </div> | | | |
| <p>Figure 1. Turbot in Subarea 4. Long-term trends in catches; discards are only available from 2013.</p> | | | |
| C1.2 The species is considered, in its most recent stock assessment, to have a biomass above the limit reference point (or proxy), OR removals by the fishery under assessment are considered by scientific authorities to be negligible. | | | |
| <p>The spawning-stock size is above $MSY_{Btrigger}$, B_{pa} and B_{lim} (Figure 2).</p> <p>Therefore, the stock is considered, in its most recent stock assessment, to have a biomass above the limit reference point, C1.2 is met.</p> | | | |

Spawning Stock Biomass

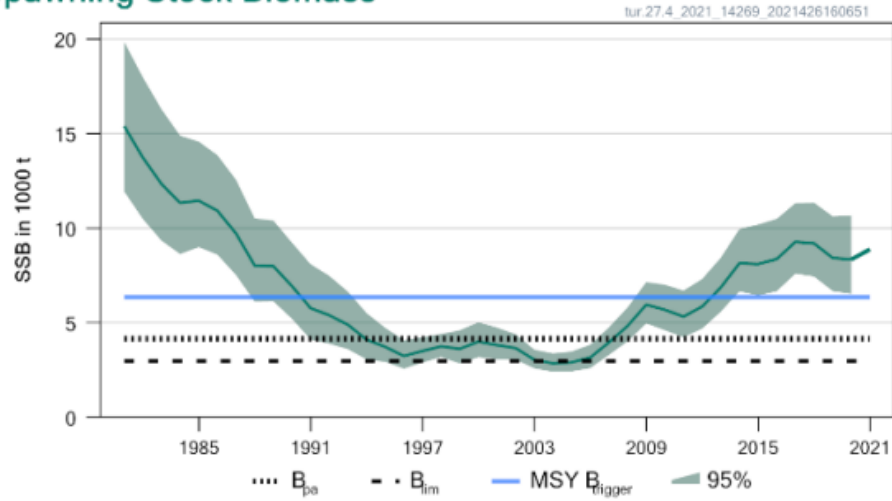


Figure 2. Turbot in Subarea 4. Spawning stock biomass.

References

ICES. 2021. Turbot (*Scophthalmus maximus*) in Subarea 4 (North Sea). In Report of the ICES Advisory Committee, 2021. ICES Advice 2021, tur.27.4. <https://doi.org/10.17895/ices.advice.7879>
<https://www.ices.dk/sites/pub/Publication%20Reports/Advice/2021/2021/tur.27.4.pdf>

Munroe, T., Costa, M., Nielsen, J., Herrera, J., de Sola, L., Rijnsdorp, A.D. & Keskin, Ç. 2015. *Scophthalmus maximus*. The IUCN Red List of Threatened Species 2015: e.T198731A45790581. Accessed on 08 February 2022.
<https://www.iucnredlist.org/species/198731/45790581>

Links

| | |
|----------------------------|---------------|
| MarinTrust Standard clause | 1.3.2.2 |
| FAO CCRF | 7.5.3 |
| GSSI | D.3.04, D5.01 |

CATEGORY D SPECIES

Category D species are those which are not subject to a species-specific management regime. In the case of mixed trawl fisheries, Category D species may make up the majority of landings. The comparative lack of scientific information on the status of the population of the species means that a risk-assessment style approach must be taken.

| | | | | |
|---------------------------------|---|--|--------------|--|
| D1 | Species Name | | | |
| | Productivity Attribute | | Value | Score |
| | Average age at maturity (years) | | | |
| | Average maximum age (years) | | | |
| | Fecundity (eggs/spawning) | | | |
| | Average maximum size (cm) | | | |
| | Average size at maturity (cm) | | | |
| | Reproductive strategy | | | |
| | Mean trophic level | | | |
| | | | | Average Productivity Score |
| | Susceptibility Attribute | | Value | Score |
| | Overlap of adult species range with fishery | | | |
| | Distribution | | | |
| | Habitat | | | |
| | Depth range | | | |
| | Selectivity | | | |
| | Post-capture mortality | | | |
| | | | | Average Susceptibility Score |
| | | | | PSA Risk Rating (From Table D3) |
| | | | | Compliance rating |
| References | | | | |
| <i>Standard clauses 1.3.2.2</i> | | | | |

Table D2 - Productivity / Susceptibility attributes and scores.

| Productivity attributes | Low productivity/ High risk | Medium productivity/ Medium risk | High productivity/ Low risk |
|---------------------------------|---|-------------------------------------|--------------------------------|
| | Score 3 | Score 2 | Score 1 |
| Average age at maturity (years) | >4 | 2 to 4 | <2 |
| Average maximum age (years) | >30 | 10 to 30 | <10 |
| Fecundity (eggs/spawning) | <1 000 | 1 000 to 10 000 | >10 000 |
| Average maximum size (cm) | >150 | 60 to 150 | <60 |
| Average size at maturity (cm) | >150 | 30 to 150 | <30 |
| Reproductive strategy | Live bearer, mouth brooder or significant parental investment | Demersal spawner "berried" | Broadcast spawner |
| Mean trophic level | >3.25 | 2.5–3.25 | <2.5 |

| Susceptibility attributes | | High susceptibility/ High risk | Medium susceptibility/ Medium risk | Low susceptibility/ Low risk |
|---------------------------|--|---|---|--|
| | | Score 3 | Score 2 | Score 1 |
| Availability | 1) Overlap of adult species range with fishery | >50% of stock occurs in the area fished | Between 25% and 50% of the stock occurs in the area fished | <25% of stock occurs in the area fished |
| | 2) Distribution | Only in the country/ fishery | Limited range in the region | Throughout region/ global distribution |
| Encounterability | 1) Habitat | Habitat preference of species make it highly likely to encounter trawl gear (e.g. demersal, muddy/sandy bottom) | Habitat preference of species make it moderately likely to encounter trawl gear (e.g. rocky bottom/reefs) | Depth or distribution of species make it unlikely to encounter trawl gear (e.g. epi-pelagic or meso-pelagic) |
| | 2) Depth range | High overlap with trawl fishing gear (20 to 60 m depth) | Medium overlap with trawl fishing gear (10 to 20 m depth) | Low overlap with trawl fishing gear (0 to 10 m, >70 m depth) |
| Selectivity | | Species >2 times mesh size or up to 4 m length | Species 1 to 2 times mesh size or 4 to 5 m length | Species <mesh size or >5 m length |
| Post capture mortality | | Most dead or retained Trawl tow >3 hours | Alive after net hauled Trawl tow 0.5 to 3 hours | Released alive Trawl tow <0.5 hours |

Note: Availability 2 is only used when there is no information for Availability 1; the most conservative score between Encounterability 1 and 2 is used.

| D3 | | Average Susceptibility Score | | |
|----------------------------|-------------|------------------------------|-------------|----------|
| | | 1 - 1.75 | 1.76 - 2.24 | 2.25 - 3 |
| Average Productivity Score | 1 - 1.75 | PASS | PASS | PASS |
| | 1.76 - 2.24 | PASS | PASS | TABLE D4 |
| | 2.25 - 3 | PASS | TABLE D4 | TABLE D4 |

| D4 Species Name | | | |
|---|---|----------------|--|
| Impacts On Species Categorised as Vulnerable by D1-D3 - Minimum Requirements | | | |
| D4.1 | The potential impacts of the fishery on this species are considered during the management process, and reasonable measures are taken to minimise these impacts. | | |
| D4.2 | There is no substantial evidence that the fishery has a significant negative impact on the species. | | |
| Outcome: | | | |
| Evidence | | | |
| D4.1: The potential impacts of the fishery on this species are considered during the management process, and reasonable measures are taken to minimise these impacts. | | | |
| D4.2 There is no substantial evidence that the fishery has a significant negative impact on the species. | | | |
| References | | | |
| Links | | | |
| MarinTrust Standard clause | | 1.3.2.2, 4.1.4 | |
| FAO CCRF | | 7.5.1 | |
| GSSI | | D.5.01 | |