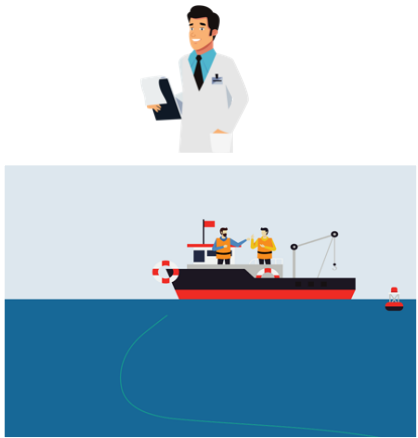


HANDLING OF THE MARINTRUST IMPROVER PROGRAMME MATERIALS BY CHAIN OF CUSTODY HOLDERS

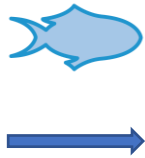
FISHERY



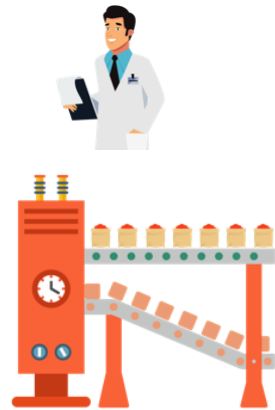
Fishery in improvement, assessed against the MarinTrust fishery criteria and part of a representative stakeholder group



PROCESSING OF RAW MATERIALS AT THE FISHMEAL / FISH OIL PLANT



Whole fish recognised as Improver Programme materials



MarinTrust **accepted Improver Programme material** enters a **fishmeal / fish oil plant** which is compliant with the MarinTrust standard



RECOGNISED as sourced in a FIP

NOT CERTIFIED

SEGREGATED from certified products processed in the same plant

FURTHER PROCESSING / TRADING



The audit covers verification of origin, segregation and effective traceability testing



PROCESSING FOR USAGE IN FEEDS



MarinTrust Improver Programme **accepted** fishmeal and fish oil, recognised by other standards (BAP, Global GAP, ASC)